



ELECTRONIC COPY

LG739505201
Report verification at igi.org



October 3, 2025

IGI Report Number **LG739505201**

Description **LABORATORY GROWN DIAMOND**

Shape and Cutting Style **PRINCESS CUT**

Measurements **7.40 X 7.23 X 5.06 MM**

GRADING RESULTS

Carat Weight **2.39 CARATS**

Color Grade **E**

Clarity Grade **VVS 2**

October 3, 2025
IGI Report Number **LG739505201**
Description **LABORATORY GROWN DIAMOND**
Shape and Cutting Style **PRINCESS CUT**
Measurements **7.40 X 7.23 X 5.06 MM**

GRADING RESULTS

Carat Weight **2.39 CARATS**

Color Grade **E**

Clarity Grade **VVS 2**

ADDITIONAL GRADING INFORMATION

Polish **EXCELLENT**

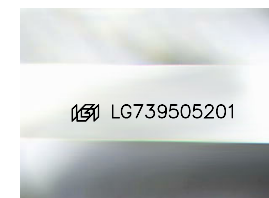
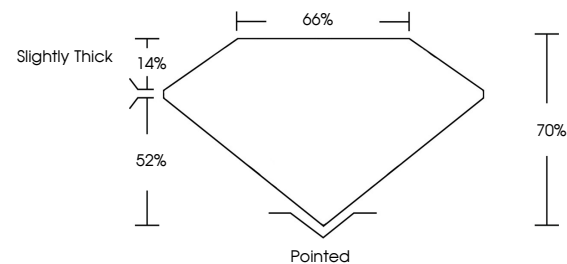
Symmetry **EXCELLENT**

Fluorescence **NONE**

Inscription(s) **IGI LG739505201**

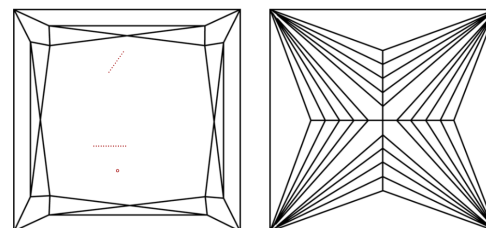
Comments: This Laboratory Grown Diamond was created by Chemical Vapor Deposition (CVD) growth process.
Type IIa

PROPORTIONS



Sample Image Used

CLARITY CHARACTERISTICS



KEY TO SYMBOLS

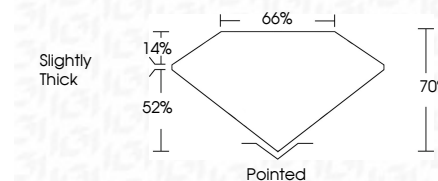
Red symbols indicate internal characteristics.
Green symbols indicate external characteristics.

COLOR

D E F G H I J Faint Very Light Light

CLARITY

FL	IF	VVS ¹⁻²	VS ¹⁻²	SI ¹⁻²	I ¹⁻³
Flawless	Internally Flawless	Very Very Slightly Included	Very Slightly Included	Slightly Included	Included



ADDITIONAL GRADING INFORMATION

Polish **EXCELLENT**

Symmetry **EXCELLENT**

Fluorescence **NONE**

Inscription(s) **IGI LG739505201**

Comments: This Laboratory Grown Diamond was created by Chemical Vapor Deposition (CVD) growth process.
Type IIa



October 3, 2025
IGI Report No LG739505201
PRINCESS CUT

7.40 X 7.23 X 5.06 MM

Carat Weight **2.39 CARATS**

Color Grade **E**

Clarity Grade **VVS 2**

Depth **70%**

Table **65%**

Graile **Slightly Thick**

Culet **Pointed**

Polish **EXCELLENT**

Symmetry **EXCELLENT**

Fluorescence **NONE**

Inscription(s) **IGI LG739505201**

Comments: This Laboratory Grown Diamond was created by Chemical Vapor Deposition (CVD) growth process.
Type IIa