



**ELECTRONIC COPY**

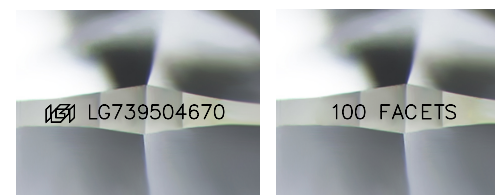
LG739504670  
Report verification at igi.org



October 11, 2025  
IGI Report Number **LG739504670**  
Description **LABORATORY GROWN DIAMOND**  
Shape and Cutting Style **ROUND MODIFIED BRILLIANT**  
Measurements **7.72 - 7.75 X 4.77 MM**

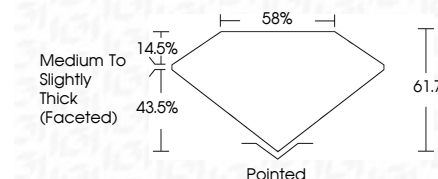
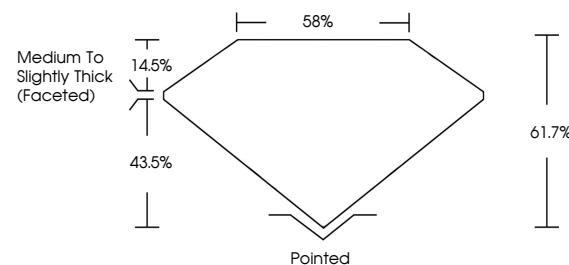
**GRADING RESULTS**

Carat Weight **1.76 CARAT**  
Color Grade **F**  
Clarity Grade **VS 2**



Sample Images Used

**PROPORTIONS**



October 11, 2025  
IGI Report Number **LG739504670**  
Description **LABORATORY GROWN DIAMOND**  
Shape and Cutting Style **ROUND MODIFIED BRILLIANT**  
Measurements **7.72 - 7.75 X 4.77 MM**  
**GRADING RESULTS**  
Carat Weight **1.76 CARAT**  
Color Grade **F**  
Clarity Grade **VS 2**

**ADDITIONAL GRADING INFORMATION**

Polish **EXCELLENT**  
Symmetry **EXCELLENT**  
Fluorescence **NONE**  
Inscription(s) **IGI LG739504670  
100 FACETS**

Comments: This Laboratory Grown Diamond was created by Chemical Vapor Deposition (CVD) growth process.  
Type IIa

**COLOR**

D E F G H I J Faint Very Light Light

**CLARITY**

FL	IF	VS <sup>1-2</sup>	VS <sup>1-2</sup>	SI <sup>1-2</sup>	I <sup>1-3</sup>
Flawless	Internally Flawless	Very Very Slightly Included	Very Slightly Included	Slightly Included	Included

**ADDITIONAL GRADING INFORMATION**

Polish **EXCELLENT**  
Symmetry **EXCELLENT**  
Fluorescence **NONE**  
Inscription(s) **IGI LG739504670  
100 FACETS**

Comments: This Laboratory Grown Diamond was created by Chemical Vapor Deposition (CVD) growth process.  
Type IIa



**IGI**



October 11, 2025  
IGI Report No **LG739504670**  
**ROUND MODIFIED BRILLIANT**  
7.72 - 7.75 X 4.77 MM  
Carat Weight **1.76 CARAT**  
Color Grade **F**  
Clarity Grade **VS 2**  
Depth **61.7%**  
Table **85%**  
Girdle **Medium to Slightly Thick (Faceted)**  
Culet **Pointed**  
Polish **EXCELLENT**  
Symmetry **EXCELLENT**  
Fluorescence **NONE**  
Inscription(s) **IGI LG739504670 100 FACETS**  
Comments: This Laboratory Grown Diamond was created by Chemical Vapor Deposition (CVD) growth process.  
Type IIa