



ELECTRONIC COPY

LG739502085
Report verification at igi.org



October 7, 2025
IGI Report Number: LG739502085
Description: LABORATORY GROWN DIAMOND
Shape and Cutting Style: CUSHION MODIFIED BRILLIANT
Measurements: 9.89 X 6.72 X 4.36 MM
Grading Results:
Carat Weight: 2.51 CARATS
Color Grade: FANCY INTENSE PINK
Clarity Grade: VS 1

LABORATORY GROWN DIAMOND REPORT

October 7, 2025
IGI Report Number: LG739502085
Description: LABORATORY GROWN DIAMOND
Shape and Cutting Style: CUSHION MODIFIED BRILLIANT
Measurements: 9.89 X 6.72 X 4.36 MM

GRADING RESULTS

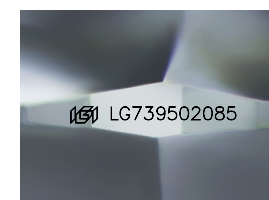
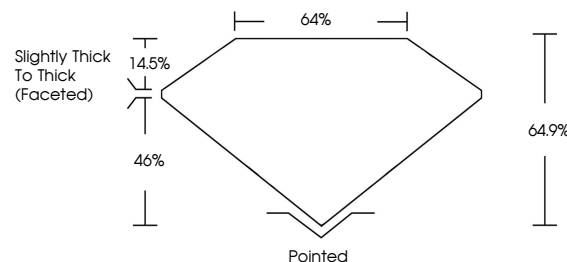
Carat Weight: 2.51 CARATS
Color Grade: FANCY INTENSE PINK
Clarity Grade: VS 1

ADDITIONAL GRADING INFORMATION

Polish: EXCELLENT
Symmetry: EXCELLENT
Fluorescence: STRONG
Inscription(s): IGI LG739502085

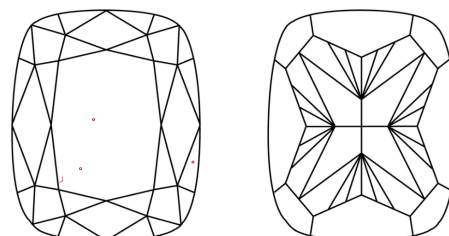
Comments: This Laboratory Grown Diamond was created by Chemical Vapor Deposition (CVD) growth process. Indications of post-growth treatment.

PROPORTIONS



Sample Image Used

CLARITY CHARACTERISTICS



KEY TO SYMBOLS

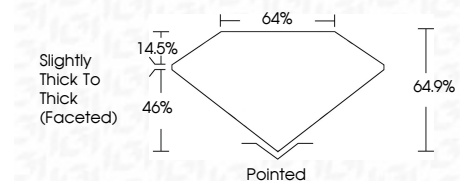
Red symbols indicate internal characteristics. Green symbols indicate external characteristics.

COLOR

D E F G H I J Faint Very Light Light

CLARITY

FL IF VS 1-2 VS 2-2 SI 1-2 I 1-3
Flawless Internally Flawless Very Very Slightly Included Very Slightly Included Slightly Included Included



ADDITIONAL GRADING INFORMATION

Polish: EXCELLENT
Symmetry: EXCELLENT
Fluorescence: STRONG
Inscription(s): IGI LG739502085
Comments: This Laboratory Grown Diamond was created by Chemical Vapor Deposition (CVD) growth process. Indications of post-growth treatment.



October 7, 2025
IGI Report No LG739502085
CUSHION MODIFIED BRILLIANT
9.89 X 6.72 X 4.36 MM
2.51 CARATS
FANCY INTENSE PINK
VS 1
64.9%
Slightly Thick To Thick (Faceted)
Pointed
EXCELLENT
EXCELLENT
STRONG
IGI LG739502085
Comments: This Laboratory Grown Diamond was created by Chemical Vapor Deposition (CVD) growth process. Indications of post-growth treatment.