



LABORATORY GROWN DIAMOND REPORT

September 30, 2025
 IGI Report Number **LG738531121**
 Description **LABORATORY GROWN DIAMOND**
 Shape and Cutting Style **ROUND BRILLIANT**
 Measurements **4.79 - 4.83 X 2.91 MM**

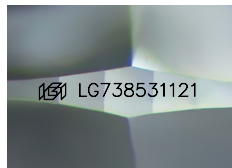
GRADING RESULTS

Carat Weight **0.41 CARAT**
 Color Grade **D**
 Clarity Grade **VVS 1**
 Cut Grade **IDEAL**

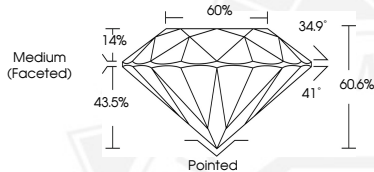
ADDITIONAL GRADING INFORMATION

Polish **EXCELLENT**
 Symmetry **EXCELLENT**
 Fluorescence **NONE**
 Inscription(s) **IGI LG738531121**

Comments: This Laboratory Grown Diamond was created by Chemical Vapor Deposition (CVD) growth process. Type IIa



Sample Image Used



September 30, 2025
 IGI Report Number **LG738531121**
ROUND BRILLIANT
LABORATORY GROWN DIAMOND
4.79 - 4.83 X 2.91 MM
0.41 CARAT
D
VVS 1
IDEAL
EXCELLENT
EXCELLENT
NONE
IGI LG738531121
 Comments: This Laboratory Grown Diamond was created by Chemical Vapor Deposition (CVD) growth process. Type IIa



September 30, 2025
 IGI Report Number **LG738531121**
ROUND BRILLIANT
LABORATORY GROWN DIAMOND
4.79 - 4.83 X 2.91 MM
0.41 CARAT
D
VVS 1
IDEAL
EXCELLENT
EXCELLENT
NONE
IGI LG738531121
 Comments: This Laboratory Grown Diamond was created by Chemical Vapor Deposition (CVD) growth process. Type IIa

THIS DOCUMENT WAS PRODUCED WITH THE FOLLOWING SECURITY MEASURES: SPECIAL DOCUMENT PAPER, INK SCREENS, WATERMARK, BACKGROUND DESIGNS, HOLOGRAM AND OTHER SECURITY FEATURES NOT LISTED AND DO EXCEED DOCUMENT SECURITY INDUSTRY GUIDELINES.