



ELECTRONIC COPY

LG738527043
Report verification at igi.org



October 14, 2025
IGI Report Number **LG738527043**

Description **LABORATORY GROWN DIAMOND**

Shape and Cutting Style **TRIANGULAR MIXED CUT**

Measurements **11.09 X 13.25 X 5.37 MM**

GRADING RESULTS

Carat Weight **3.42 CARATS**

Color Grade **FANCY INTENSE PINK**

Clarity Grade **VVS 2**

October 14, 2025
IGI Report Number **LG738527043**
Description **LABORATORY GROWN DIAMOND**
Shape and Cutting Style **TRIANGULAR MIXED CUT**
Measurements **11.09 X 13.25 X 5.37 MM**

GRADING RESULTS

Carat Weight **3.42 CARATS**

Color Grade **FANCY INTENSE PINK**

Clarity Grade **VVS 2**

ADDITIONAL GRADING INFORMATION

Polish **EXCELLENT**

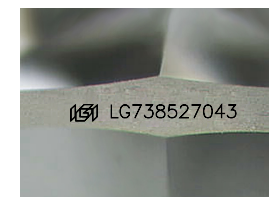
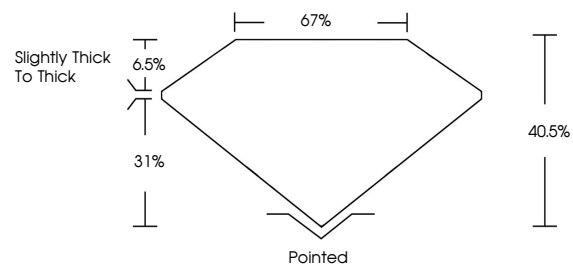
Symmetry **EXCELLENT**

Fluorescence **SLIGHT**

Inscription(s) **LG738527043**

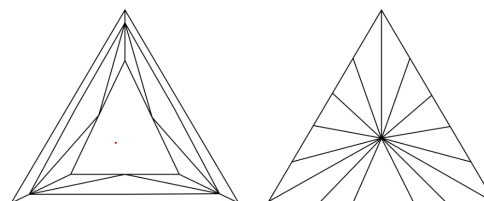
Comments: This Laboratory Grown Diamond was created by Chemical Vapor Deposition (CVD) growth process. Indications of post-growth treatment.

PROPORTIONS



Sample Image Used

CLARITY CHARACTERISTICS



KEY TO SYMBOLS

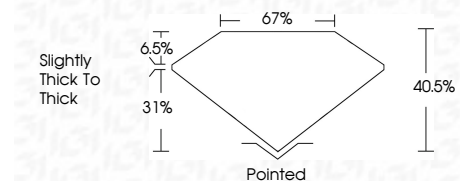
Red symbols indicate internal characteristics.
Green symbols indicate external characteristics.

COLOR

D E F G H I J Faint Very Light Light

CLARITY

FL	IF	VVS ¹⁻²	VS ¹⁻²	SI ¹⁻²	I ¹⁻³
Flawless	Internally Flawless	Very Very Slightly Included	Very Slightly Included	Slightly Included	Included



ADDITIONAL GRADING INFORMATION

Polish **EXCELLENT**

Symmetry **EXCELLENT**

Fluorescence **SLIGHT**

Inscription(s) **LG738527043**

Comments: This Laboratory Grown Diamond was created by Chemical Vapor Deposition (CVD) growth process. Indications of post-growth treatment.



IGI



October 14, 2025
IGI Report No **LG738527043**
TRIANGULAR MIXED CUT

3.42 CARATS
Carat Weight
FANCY INTENSE PINK
Color Grade
VVS 2
Clarity Grade
40.5%
Depth
67%
Table
Slightly Thick To Thick
Girdle
Pointed
Culet
EXCELLENT
Polish
EXCELLENT
Symmetry
EXCELLENT
Fluorescence
SLIGHT
Inscription(s)
 LG738527043

Comments: This Laboratory Grown Diamond was created by Chemical Vapor Deposition (CVD) growth process. Indications of post-growth treatment.