



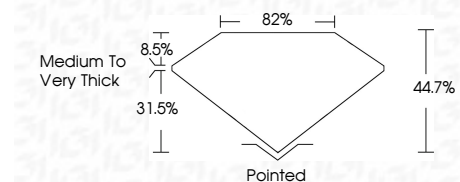
**ELECTRONIC COPY**

LG738524865  
Report verification at igi.org



October 1, 2025  
IGI Report Number **LG738524865**  
Description **LABORATORY GROWN DIAMOND**  
Shape and Cutting Style **HALF MOON BRILLIANT**  
Measurements **8.46 X 5.89 X 3.78 MM**

**GRADING RESULTS**  
Carat Weight **1.32 CARAT**  
Color Grade **D**  
Clarity Grade **VS 2**



**ADDITIONAL GRADING INFORMATION**  
Polish **EXCELLENT**  
Symmetry **EXCELLENT**  
Fluorescence **NONE**  
Inscription(s) **IGI LG738524865**  
Comments: This Laboratory Grown Diamond was created by Chemical Vapor Deposition (CVD) growth process. Type IIa



October 1, 2025  
IGI Report No LG738524865  
**HALF MOON BRILLIANT**  
8.46 X 5.89 X 3.78 MM  
1.32 CARAT  
D  
Color Grade  
VS 2  
44.7%  
82%  
Medium to Very Thick  
Pointed  
EXCELLENT  
EXCELLENT  
NONE  
IGI LG738524865  
Comments: This Laboratory Grown Diamond was created by Chemical Vapor Deposition (CVD) growth process. Type IIa

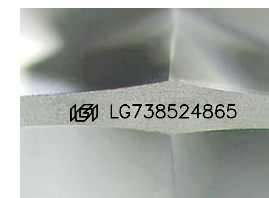
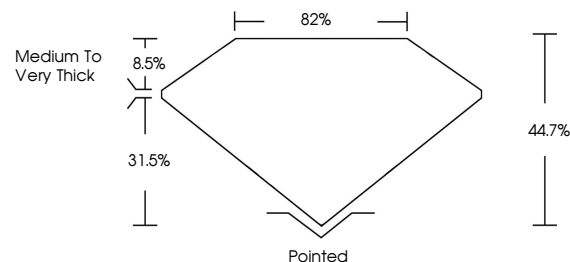
**LABORATORY GROWN DIAMOND REPORT**

October 1, 2025  
IGI Report Number **LG738524865**  
Description **LABORATORY GROWN DIAMOND**  
Shape and Cutting Style **HALF MOON BRILLIANT**  
Measurements **8.46 X 5.89 X 3.78 MM**

**GRADING RESULTS**  
Carat Weight **1.32 CARAT**  
Color Grade **D**  
Clarity Grade **VS 2**

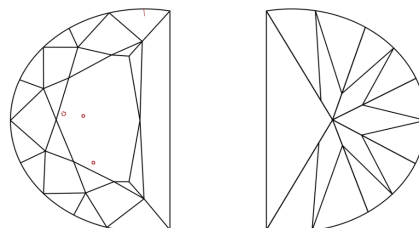
**ADDITIONAL GRADING INFORMATION**  
Polish **EXCELLENT**  
Symmetry **EXCELLENT**  
Fluorescence **NONE**  
Inscription(s) **IGI LG738524865**  
Comments: This Laboratory Grown Diamond was created by Chemical Vapor Deposition (CVD) growth process. Type IIa

**PROPORTIONS**



Sample Image Used

**CLARITY CHARACTERISTICS**



**KEY TO SYMBOLS**

Red symbols indicate internal characteristics.  
Green symbols indicate external characteristics.

**COLOR**

D E F G H I J Faint Very Light Light

**CLARITY**

FL	IF	VS <sup>1-2</sup>	VS <sup>1-2</sup>	SI <sup>1-2</sup>	I <sup>1-3</sup>
Flawless	Internally Flawless	Very Very Slightly Included	Very Slightly Included	Slightly Included	Included

