



**ELECTRONIC COPY**

## LABORATORY GROWN DIAMOND REPORT

|                         |                          |
|-------------------------|--------------------------|
| October 3, 2025         |                          |
| IGI Report Number       | LG738523292              |
| Description             | LABORATORY GROWN DIAMOND |
| Shape and Cutting Style | ROUND BRILLIANT          |
| Measurements            | 11.55 - 11.62 X 7.13 MM  |

## GRADING RESULTS

|               |             |
|---------------|-------------|
| Carat Weight  | 6.00 CARATS |
| Color Grade   | E           |
| Clarity Grade | VVS 2       |
| Cut Grade     | EXCELLENT   |

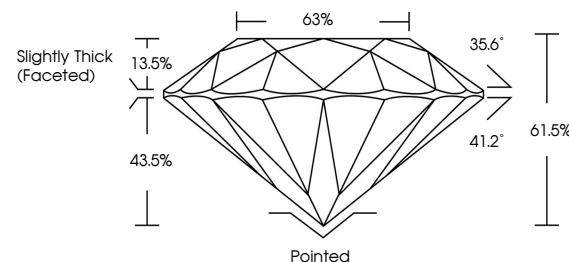
### ADDITIONAL GRADING INFORMATION

|                |                 |
|----------------|-----------------|
| Polish         | EXCELLENT       |
| Symmetry       | EXCELLENT       |
| Fluorescence   | NONE            |
| Inscription(s) | 151 LG738523292 |

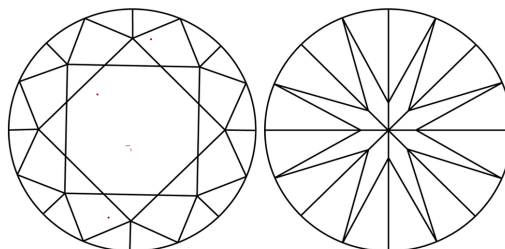
Comments: This Laboratory Grown Diamond was created by Chemical Vapor Deposition (CVD) growth process.  
Type IIa

LG738523292  
Report verification at lqi.org

## PROPORTIONS

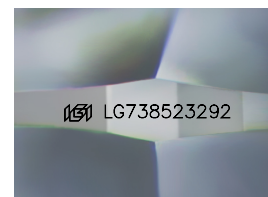


## CLARITY CHARACTERISTICS



## KEY TO SYMBOLS

Red symbols indicate internal characteristics.  
Green symbols indicate external characteristics.



Sample Image Used

## COLOR

D E F G H I J Faint Very Light Light

## CLARITY

IF WS<sup>1-2</sup> VS<sup>1-2</sup> SI<sup>1-2</sup> |<sup>1-3</sup>

| Internally<br>Flawless | Very Very<br>Slightly Included | Very<br>Slightly Included | Slightly<br>Included | Included |
|------------------------|--------------------------------|---------------------------|----------------------|----------|
|------------------------|--------------------------------|---------------------------|----------------------|----------|

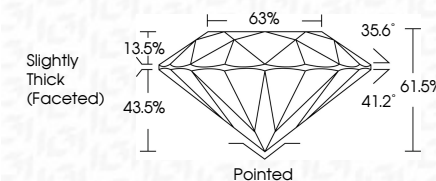
## LABORATORY GROWN DIAMOND REPORT



|                         |                          |
|-------------------------|--------------------------|
| October 3, 2025         |                          |
| IGI Report Number       | LG738523292              |
| Description             | LABORATORY GROWN DIAMOND |
| Shape and Cutting Style | ROUND BRILLIANT          |
| Measurements            | 11.55 - 11.62 X 7.13 MM  |

## GRADING RESULTS

|               |             |
|---------------|-------------|
| Carat Weight  | 6.00 CARATS |
| Color Grade   | E           |
| Clarity Grade | VVS 2       |
| Cut Grade     | EXCELLENT   |



### ADDITIONAL GRADING INFORMATION

|                                                                                                        |                                                                                                 |
|--------------------------------------------------------------------------------------------------------|-------------------------------------------------------------------------------------------------|
| Polish                                                                                                 | EXCELLENT                                                                                       |
| Symmetry                                                                                               | EXCELLENT                                                                                       |
| Fluorescence                                                                                           | NONE                                                                                            |
| Inscription(s)                                                                                         |  LG738523292 |
| Comments: This Laboratory Grown Diamond was created by Chemical Vapor Deposition (CVD) growth process. |                                                                                                 |
| Type IIa                                                                                               |                                                                                                 |



© IGI 2020, International Gemological Institute

FD - 10 20

**www.igi.org**



THIS DOCUMENT WAS PRODUCED WITH THE FOLLOWING SECURITY MEASURES: SPECIAL DOCUMENT PAPER, INK SCREENS, WATERMARK, BACKGROUND DESIGNS, HOLOGRAM AND OTHER SECURITY FEATURES NOT LISTED AND DO EXCEED DOCUMENT SECURITY INDUSTRY GUIDELINES

October 3, 2025  
GI Report No LG738523292  
ROUND BRILLIANT

|                 |                         |             |               |           |       |       |                            |
|-----------------|-------------------------|-------------|---------------|-----------|-------|-------|----------------------------|
| ROUND BRILLIANT | 11.55 - 11.62 X 7.13 MM | 6.00 CARATS | VVS 2         | EXCELLENT | 61.5% | 63%   | Slightly Thick (Excellent) |
|                 | Carat Weight            |             | Clarity Grade | Out Grade | Depth | Table | Grade                      |
|                 | Color Grade             |             |               |           |       |       |                            |

|              | Pointed | EXCELLENT | EXCELLENT | NONE |
|--------------|---------|-----------|-----------|------|
| Culet        |         |           |           |      |
| Polish       |         |           |           |      |
| Symmetry     |         |           |           |      |
| Fluorescence |         |           |           |      |

**Comments:**  
This Laboratory Grown Diamond was created by Chemical Vapor Deposition (CVD) growth process.