



ELECTRONIC COPY

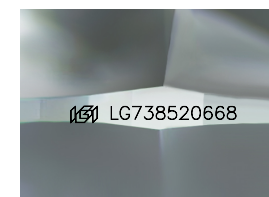
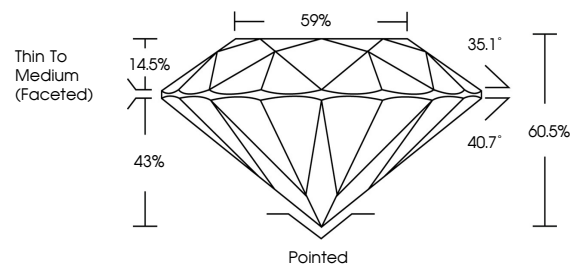
LG738520668
Report verification at igi.org



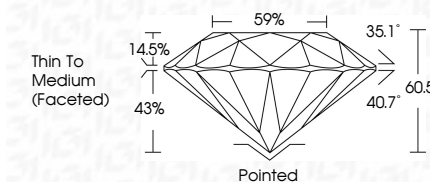
October 14, 2025
IGI Report Number **LG738520668**
Description **LABORATORY GROWN DIAMOND**
Shape and Cutting Style **ROUND BRILLIANT**
Measurements **9.81 - 9.86 X 5.95 MM**
GRADING RESULTS
Carat Weight **3.54 CARATS**
Color Grade **F**
Clarity Grade **VVS 2**
Cut Grade **IDEAL**

October 14, 2025
IGI Report Number **LG738520668**
Description **LABORATORY GROWN DIAMOND**
Shape and Cutting Style **ROUND BRILLIANT**
Measurements **9.81 - 9.86 X 5.95 MM**
GRADING RESULTS
Carat Weight **3.54 CARATS**
Color Grade **F**
Clarity Grade **VVS 2**
Cut Grade **IDEAL**

PROPORTIONS



Sample Image Used



ADDITIONAL GRADING INFORMATION
Polish **EXCELLENT**
Symmetry **EXCELLENT**
Fluorescence **NONE**
Inscription(s) **IGI LG738520668**

Comments: This Laboratory Grown Diamond was created by Chemical Vapor Deposition (CVD) growth process. Type IIa

COLOR

D E F G H I J Faint Very Light Light

CLARITY

FL	IF	VVS ¹⁻²	VS ¹⁻²	SI ¹⁻²	I ¹⁻³
Flawless	Internally Flawless	Very Very Slightly Included	Very Slightly Included	Slightly Included	Included

ADDITIONAL GRADING INFORMATION

Polish **EXCELLENT**
Symmetry **EXCELLENT**
Fluorescence **NONE**
Inscription(s) **IGI LG738520668**
Comments: This Laboratory Grown Diamond was created by Chemical Vapor Deposition (CVD) growth process. Type IIa



October 14, 2025
IGI Report No **LG738520668**
ROUND BRILLIANT
9.81 - 9.86 X 5.95 MM
3.54 CARATS
F
VVS 2
IDEAL
60.5%
59%
Thin To Medium (Faceted)
Pointed
EXCELLENT
EXCELLENT
NONE
IGI LG738520668
Comments: This Laboratory Grown Diamond was created by Chemical Vapor Deposition (CVD) growth process. Type IIa