



**INTERNATIONAL
GEMOLOGICAL
INSTITUTE**

ELECTRONIC COPY

LG738520027
Report verification at igi.org

LABORATORY GROWN DIAMOND REPORT



October 9, 2025

IGI Report Number **LG738520027**

Description	LABORATORY GROWN DIAMOND
-------------	--------------------------

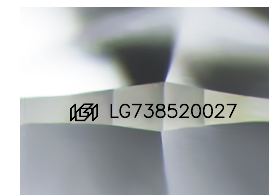
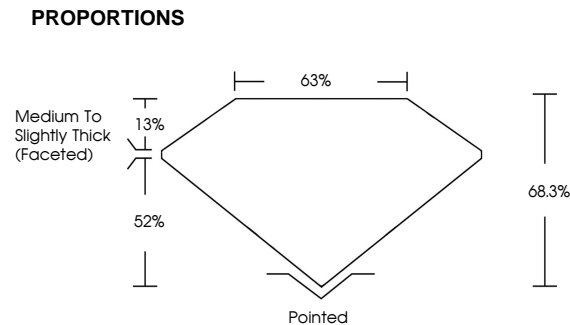
Shape and Cutting Style **CUSHION MODIFIED
BRILLIANT**

Measurements **8.77 X 6.78 X 4.63 MM**

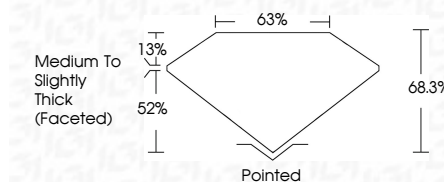
GRADING RESULTS

Carat Weight **2.09 CARATS**

Color Grade D

Clarity Grade VVS 2

Sample Image Used



COLOR

D E F G H I J Faint Very Light Light

CLARITY

FL IF WS¹⁻² VS¹⁻² SI¹⁻² |¹⁻³

Flawless	Internally Flawless	Very Very Slightly Included	Very Slightly Included	Slightly Included	Included
----------	---------------------	-----------------------------	------------------------	-------------------	----------

ADDITIONAL GRADING INFORMATION

Polish EXCELLENT

Symmetry **EXCELLENT**Fluorescence **NONE**Inscription(s) LG738520027

Comments: This Laboratory Grown Diamond was created by Chemical Vapor Deposition (CVD) growth process.
Type IIa



© IGI 2020, International Gemological Institute

FD - 10 20

www.igi.org

THIS DOCUMENT WAS PRODUCED WITH THE FOLLOWING SECURITY MEASURES: SPECIAL DOCUMENT PAPER, INK SCREENS, WATERMARK, BACKGROUND DESIGNS, HOLOGRAM AND OTHER SECURITY FEATURES NOT LISTED AND DO EXCEED DOCUMENT SECURITY INDUSTRY GUIDELINES

October 9, 2025
 CGI Report No LG738520027
 EMISSION MODIFIED BRILLIANT

3.77 X 6.78 X 4.63 MM	Carat Weight	2.09 CARATS
	Color Grade	D
	Clarity Grade	VVS 2
	Depth	68.9%
	Table	68%
	Grade	Medium To Slightly Thick (faceted)
	Culet	Pointed
	Polish	EXCELLENT
	Symmetry	EXCELLENT
	Fluorescence	NONE

Comments:
This Laboratory Grown Diamond was created by Chemical Vapor Deposition (CVD) growth process.