



ELECTRONIC COPY

LG738519004
Report verification at igi.org



October 14, 2025
IGI Report Number **LG738519004**
Description **LABORATORY GROWN DIAMOND**
Shape and Cutting Style **CUT CORNERED
RECTANGULAR MODIFIED
BRILLIANT**
Measurements **11.40 X 7.64 X 5.01 MM**
GRADING RESULTS
Carat Weight **4.02 CARATS**
Color Grade **FANCY VIVID BROWNISH
PINK**
Clarity Grade **VS 1**

LABORATORY GROWN DIAMOND REPORT

October 14, 2025
IGI Report Number **LG738519004**
Description **LABORATORY GROWN DIAMOND**
Shape and Cutting Style **CUT CORNERED RECTANGULAR
MODIFIED BRILLIANT**
Measurements **11.40 X 7.64 X 5.01 MM**

GRADING RESULTS

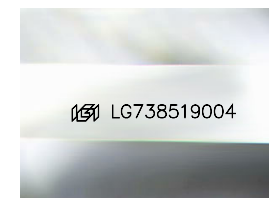
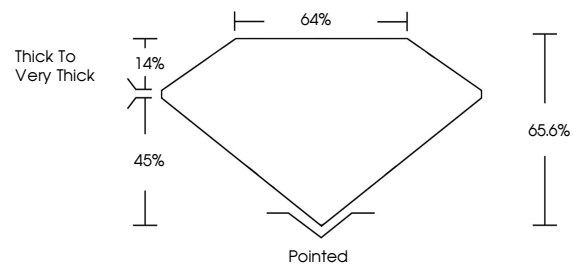
Carat Weight **4.02 CARATS**
Color Grade **FANCY VIVID BROWNISH PINK**
Clarity Grade **VS 1**

ADDITIONAL GRADING INFORMATION

Polish **EXCELLENT**
Symmetry **EXCELLENT**
Fluorescence **STRONG**
Inscription(s) **IGI LG738519004**

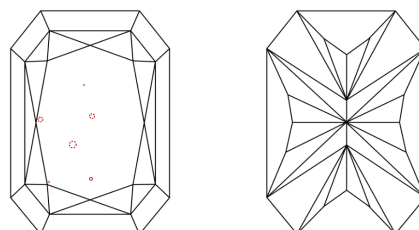
Comments: This Laboratory Grown Diamond was created by Chemical Vapor Deposition (CVD) growth process. Indications of post-growth treatment.

PROPORTIONS



Sample Image Used

CLARITY CHARACTERISTICS



KEY TO SYMBOLS

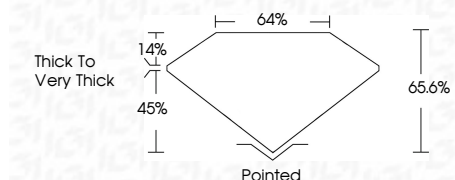
Red symbols indicate internal characteristics.
Green symbols indicate external characteristics.

COLOR

D E F G H I J Faint Very Light Light

CLARITY

FL	IF	VS ¹⁻²	VS ¹⁻²	SI ¹⁻²	I ¹⁻³
Flawless	Internally Flawless	Very Very Slightly Included	Very Slightly Included	Slightly Included	Included



ADDITIONAL GRADING INFORMATION

Polish **EXCELLENT**
Symmetry **EXCELLENT**
Fluorescence **STRONG**
Inscription(s) **IGI LG738519004**
Comments: This Laboratory Grown Diamond was created by Chemical Vapor Deposition (CVD) growth process. Indications of post-growth treatment.



October 14, 2025
IGI Report No LG738519004
CUT CORNERED RECT. MODIFIED BRILLIANT
4.02 CARATS
FANCY VIVID BROWNISH PINK
VS 1
65.6%
64%
Thick to Very Thick
Pointed
EXCELLENT
EXCELLENT
STRONG
IGI LG738519004
Comments: This Laboratory Grown Diamond was created by Chemical Vapor Deposition (CVD) growth process. Indications of post-growth treatment.