



**ELECTRONIC COPY**

LG738516200  
Report verification at igi.org



October 9, 2025

IGI Report Number **LG738516200**

Description **LABORATORY GROWN DIAMOND**

Shape and Cutting Style **PRINCESS CUT**

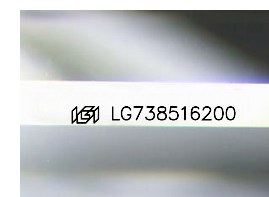
Measurements **6.34 X 6.23 X 4.24 MM**

**GRADING RESULTS**

Carat Weight **1.55 CARAT**

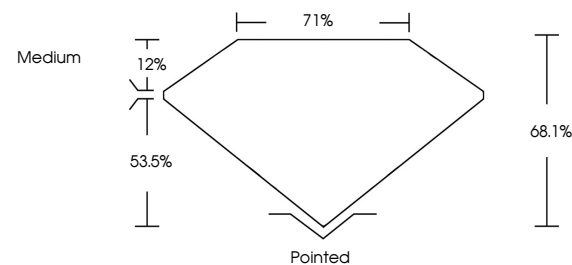
Color Grade **E**

Clarity Grade **VVS 1**

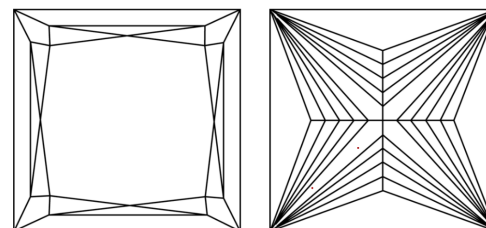


Sample Image Used

**PROPORTIONS**



**CLARITY CHARACTERISTICS**



**KEY TO SYMBOLS**

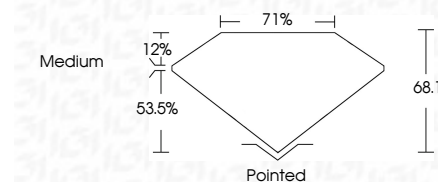
Red symbols indicate internal characteristics.  
Green symbols indicate external characteristics.

**COLOR**

D E F G H I J Faint Very Light Light

**CLARITY**

FL	IF	VVS <sup>1-2</sup>	VS <sup>1-2</sup>	SI <sup>1-2</sup>	I <sup>1-3</sup>
Flawless	Internally Flawless	Very Very Slightly Included	Very Slightly Included	Slightly Included	Included



**ADDITIONAL GRADING INFORMATION**

Polish **EXCELLENT**

Symmetry **EXCELLENT**

Fluorescence **NONE**

Inscription(s) **IGI LG738516200**

Comments: This Laboratory Grown Diamond was created by Chemical Vapor Deposition (CVD) growth process. Type IIa



**IGI**



October 9, 2025	1.55 CARAT	E	VVS 1	68.1%	71%	Medium	Pointed
IGI Report No LG738516200	6.34 X 6.23 X 4.24 MM	PRINCESS CUT	EXCELLENT	EXCELLENT	NONE	IGI LG738516200	
Carat Weight	Color Grade	Clarity Grade	Depth	Table	Graile	Culet	Polish
Symmetry	Fluorescence	Inscription(s)					

Comments: This Laboratory Grown Diamond was created by Chemical Vapor Deposition (CVD) growth process. Type IIa