



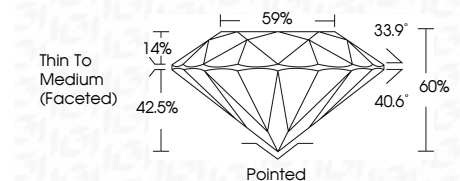
ELECTRONIC COPY

LG738516067 Report verification at igi.org



October 7, 2025 IGI Report Number LG738516067 Description LABORATORY GROWN DIAMOND Shape and Cutting Style ROUND BRILLIANT Measurements 9.08 - 9.14 X 5.46 MM

GRADING RESULTS Carat Weight 2.77 CARATS Color Grade E Clarity Grade VVS 2 Cut Grade IDEAL



ADDITIONAL GRADING INFORMATION Polish EXCELLENT Symmetry EXCELLENT Fluorescence NONE Inscription(s) LG738516067 Comments: This Laboratory Grown Diamond was created by Chemical Vapor Deposition (CVD) growth process. Type IIa



October 7, 2025 IGI Report No LG738516067 ROUND BRILLIANT 9.08 - 9.14 X 5.46 MM 2.77 CARATS E VVS 2 IDEAL 60% 59% Thin To Medium (Faceted) Pointed EXCELLENT EXCELLENT NONE NONE LG738516067

LABORATORY GROWN DIAMOND REPORT

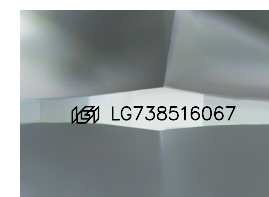
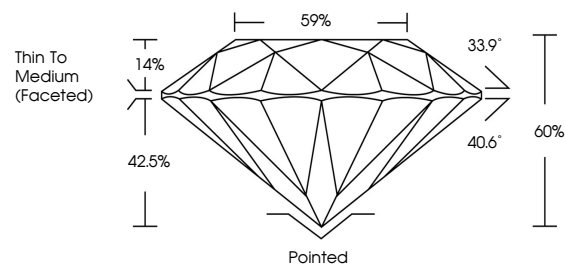
October 7, 2025 IGI Report Number LG738516067 Description LABORATORY GROWN DIAMOND Shape and Cutting Style ROUND BRILLIANT Measurements 9.08 - 9.14 X 5.46 MM

GRADING RESULTS Carat Weight 2.77 CARATS Color Grade E Clarity Grade VVS 2 Cut Grade IDEAL

ADDITIONAL GRADING INFORMATION Polish EXCELLENT Symmetry EXCELLENT Fluorescence NONE Inscription(s) LG738516067

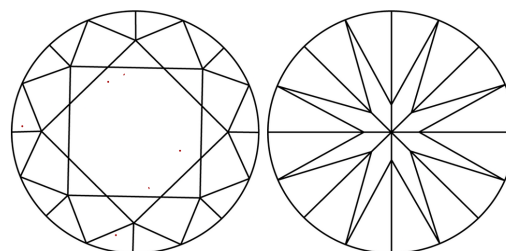
Comments: This Laboratory Grown Diamond was created by Chemical Vapor Deposition (CVD) growth process. Type IIa

PROPORTIONS



Sample Image Used

CLARITY CHARACTERISTICS



KEY TO SYMBOLS

Red symbols indicate internal characteristics. Green symbols indicate external characteristics.

COLOR

D E F G H I J Faint Very Light Light

CLARITY

FL IF VVS 1-2 VS 1-2 SI 1-2 I 1-3 Flawless Internally Flawless Very Very Slightly Included Very Slightly Included Slightly Included Included

