



ELECTRONIC COPY

LABORATORY GROWN DIAMOND REPORT

October 1, 2025	
IGI Report Number	LG738515539
Description	LABORATORY GROWN DIAMOND
Shape and Cutting Style	ROUND BRILLIANT
Measurements	6.73 - 6.76 X 4.06 MM

GRADING RESULTS

Carat Weight	1.15 CARAT
Color Grade	D
Clarity Grade	VS 1
Cut Grade	IDEAL

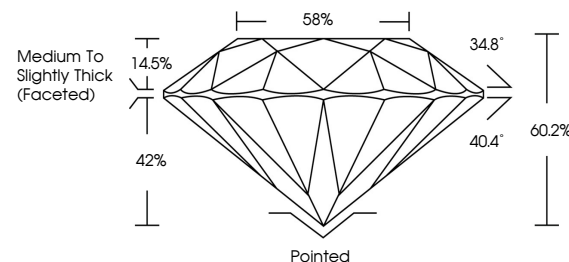
ADDITIONAL GRADING INFORMATION

Polish	EXCELLENT
Symmetry	EXCELLENT
Fluorescence	NONE
Inscription(s)	151 LG738515539

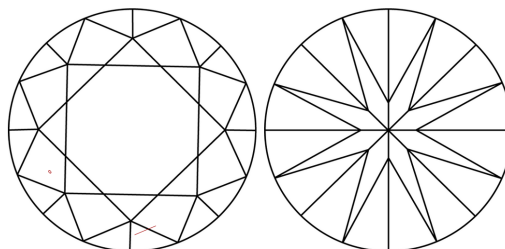
Comments: As Grown - No indication of post-growth treatment.
This Laboratory Grown Diamond was created by High Pressure High Temperature (HPHT) growth process.
Type II

LG738515539
Report verification at lgi.org

PROPORTIONS

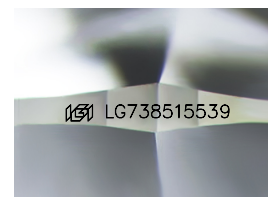


CLARITY CHARACTERISTICS



KEY TO SYMBOLS

Red symbols indicate internal characteristics.
Green symbols indicate external characteristics.



Sample Image Used

COLOR

D E F G H I J Faint Very Light Light

CLARITY

IF VS¹⁻² VS¹⁻² S¹⁻² |¹⁻³

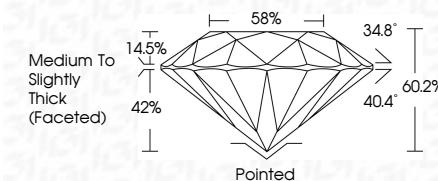
Internally Flawless	Very Very Slightly Included	Very Slightly Included	Slightly Included	Included
------------------------	--------------------------------	---------------------------	----------------------	----------



October 1, 2025	
IGI Report Number	LG738515539
Description	LABORATORY GROWN DIAMOND
Shape and Cutting Style	ROUND BRILLIANT
Measurements	6.73 - 6.76 X 4.06 MM

GRADING RESULTS

Carat Weight	1.15 CARAT
Color Grade	D
Clarity Grade	VS 1
Cut Grade	IDEAL



ADDITIONAL GRADING INFORMATION

Polish	EXCELLENT
Symmetry	EXCELLENT
Fluorescence	NONE
Inscription(s)	 LG738515539
Comments: As Grown - No indication of post-growth treatment.	
This Laboratory Grown Diamond was created by High Pressure High Temperature (HPHT) growth process.	
Type II	



© IGI 2020, International Gemological Institute

FD - 10 20



THIS DOCUMENT WAS PRODUCED WITH THE FOLLOWING SECURITY MEASURES: SPECIAL DOCUMENT PAPER, INK SCREENS, WATERMARK, BACKGROUND DESIGNS, HOLOGRAM AND OTHER SECURITY FEATURES NOT LISTED AND DO EXCEED DOCUMENT SECURITY INDUSTRY GUIDELINES

www.igi.org

Date: October 1, 2026	
ID Report No: LG789515539	
Stone Description: ROUND BRILLIANT	
Weight: 4.75 X 4.06 MM G: 7.8 - 7.9	
Color: Color Grade	Clarity: VS 1
Cut: Cut Grade	Depth: IDEAL
Girdle: Girdle	Table: 60.2%
Symmetry: Symmetry	Fluorescence: 58%
Inscriptions(s):	Medium To Slightly Thick Faceting:
	Polish: Polished
	Excellent: EXCELLENT
	None: NONE
	Serial Number: 681 LG789515539

Comments: As Grown - No indication of post-growth treatment.
This Laboratory Grown Diamond was created by High Pressure High Temperature (HPHT) growth process.