



**INTERNATIONAL  
GEMOLOGICAL  
INSTITUTE**

**ELECTRONIC COPY**

LG738512343  
Report verification at [igi.org](https://igi.org)

LABORATORY GROWN DIAMOND REPORT



October 8, 2025

IGI Report Number **LG738512343**

Description	LABORATORY GROWN DIAMOND
-------------	--------------------------

Shape and Cutting Style **PRINCESS CUT**

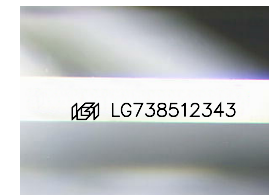
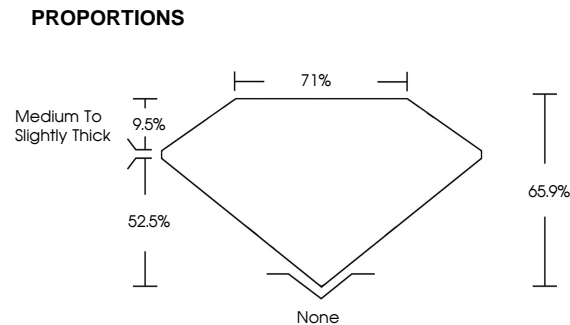
Measurements **6.48 X 6.31 X 4.16 MM**

## GRADING RESULTS

Carat Weight **1.50 CARAT**

Color Grade **FANCY VIVID BLUE**

Clarity Grade **VS 1**



Sample Image Used

**COLOR**

D E F G H I J Faint Very Light Light

## CLARITY

FL IF WS<sup>1-2</sup> VS<sup>1-2</sup> S<sup>1-2</sup> |<sup>1-3</sup>

Flawless	Internally Flawless	Very Very Slightly Included	Very Slightly Included	Slightly Included	Included
----------	---------------------	-----------------------------	------------------------	-------------------	----------

### ADDITIONAL GRADING INFORMATION

Polish **EXCELLENT**Symmetry **EXCELLENT**Fluorescence **NONE**Inscription(s)  LG738512343

Comments: This Laboratory Grown Diamond was created by Chemical Vapor Deposition (CVD) growth process.  
Indications of post-growth treatment.



IGI

October 8, 2025	1.50 CARAT
IGI Report No. IGI739512343	FANCY VIVID BLUE
PRINCESS CUT	VS 1
	65.5%
	71%
	Medium to Slightly Thick
	None
	EXCELLENT
	EXCELLENT
	NONE
	IGI 1G9739512343
Comments:	
	This Laboratory Grown Diamond was created by Chemical Vapor Deposition (CVD) growth process.
	Indications of post-growth treatment.

© IGI 2020, International Gemological Institute

FD - 10 20

**www.igi.org**

THIS DOCUMENT WAS PRODUCED WITH THE FOLLOWING SECURITY MEASURES: SPECIAL DOCUMENT PAPER, INK SCREENS, WATERMARK BACKGROUND DESIGNS, HOLOGRAM AND OTHER SECURITY FEATURES NOT LISTED AND DO EXCEED DOCUMENT SECURITY INDUSTRY GUIDELINES