



**ELECTRONIC COPY**

LG738501578  
Report verification at igi.org



September 30, 2025

IGI Report Number **LG738501578**

Description **LABORATORY GROWN DIAMOND**

Shape and Cutting Style **ROUND BRILLIANT**

Measurements **11.69 - 11.74 X 7.31 MM**

**GRADING RESULTS**

Carat Weight **6.15 CARATS**

Color Grade **E**

Clarity Grade **VVS 2**

Cut Grade **IDEAL**

September 30, 2025  
IGI Report Number **LG738501578**  
Description **LABORATORY GROWN DIAMOND**  
Shape and Cutting Style **ROUND BRILLIANT**  
Measurements **11.69 - 11.74 X 7.31 MM**

**GRADING RESULTS**

Carat Weight **6.15 CARATS**

Color Grade **E**

Clarity Grade **VVS 2**

Cut Grade **IDEAL**

**ADDITIONAL GRADING INFORMATION**

Polish **EXCELLENT**

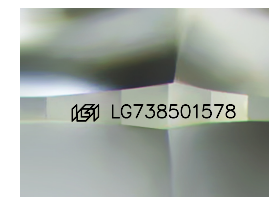
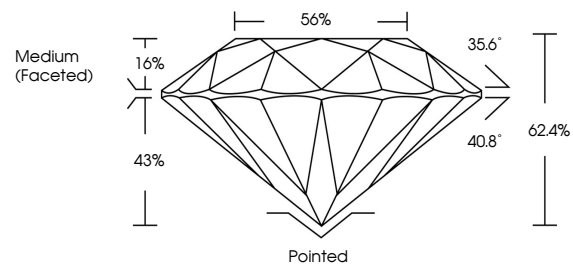
Symmetry **EXCELLENT**

Fluorescence **NONE**

Inscription(s) **IGI LG738501578**

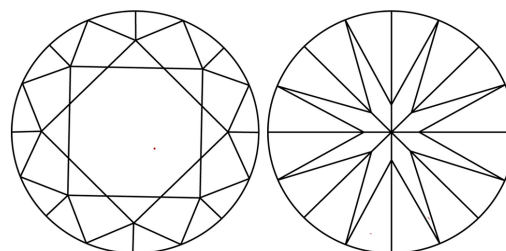
Comments: This Laboratory Grown Diamond was created by Chemical Vapor Deposition (CVD) growth process.  
Type IIa

**PROPORTIONS**



Sample Image Used

**CLARITY CHARACTERISTICS**



**KEY TO SYMBOLS**

Red symbols indicate internal characteristics.  
Green symbols indicate external characteristics.

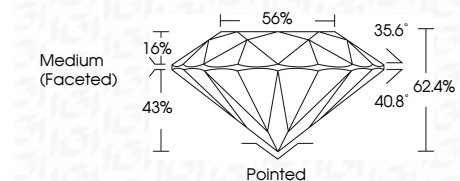
**COLOR**

D E F G H I J Faint Very Light Light

**CLARITY**

IF WS<sup>1-2</sup> VS<sup>1-2</sup> SI<sup>1-2</sup> I<sup>1-3</sup>

Internally Flawless Very Very Slightly Included Very Slightly Included Slightly Included Included



**ADDITIONAL GRADING INFORMATION**

Polish **EXCELLENT**

Symmetry **EXCELLENT**

Fluorescence **NONE**

Inscription(s) **IGI LG738501578**

Comments: This Laboratory Grown Diamond was created by Chemical Vapor Deposition (CVD) growth process.  
Type IIa



**IGI**



|                         |                           |                 |               |       |       |        |       |        |                  |              |                |  |      |                 |
|-------------------------|---------------------------|-----------------|---------------|-------|-------|--------|-------|--------|------------------|--------------|----------------|--|------|-----------------|
| September 30, 2025      | IGI Report No LG738501578 | ROUND BRILLIANT | 6.15 CARATS   | E     | VVS 2 | IDEAL  | 62.4% | 56%    | Medium (Faceted) | Pointed      | EXCELLENT      | EXCELLENT  | NONE | IGI LG738501578 |
| 11.69 - 11.74 X 7.31 MM | Carat Weight              | Color Grade     | Clarity Grade | Depth | Table | Girdle | Culet | Polish | Symmetry         | Fluorescence | Inscription(s) | Comments: This Laboratory Grown Diamond was created by Chemical Vapor Deposition (CVD) growth process.<br>Type IIa |      |                 |