



LABORATORY GROWN DIAMOND REPORT

September 29, 2025
 IGI Report Number **LG737599660**
 Description **LABORATORY GROWN DIAMOND**
 Shape and Cutting Style **HEXAGONAL STEP CUT**
 Measurements **8.42 X 5.96 X 3.04 MM**

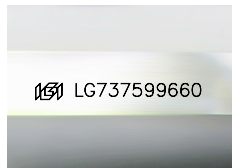
GRADING RESULTS

Carat Weight **0.84 CARAT**
 Color Grade **E**
 Clarity Grade **VVS 2**

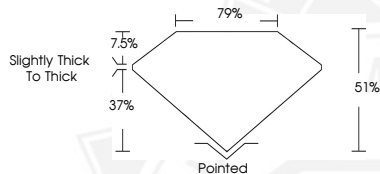
ADDITIONAL GRADING INFORMATION

Polish **EXCELLENT**
 Symmetry **EXCELLENT**
 Fluorescence **NONE**
 Inscription(s) **IGI LG737599660**

Comments: This Laboratory Grown Diamond was created by Chemical Vapor Deposition (CVD) growth process. Type IIa



Sample Image Used



September 29, 2025
 IGI Report Number **LG737599660**
 HEXAGONAL STEP CUT
 LABORATORY GROWN DIAMOND
 8.42 X 5.96 X 3.04 MM
 Carat Weight **0.84 CARAT**
 Color Grade **E**
 Clarity Grade **VVS 2**
 Polish **EXCELLENT**
 Symmetry **EXCELLENT**
 Fluorescence **NONE**
 Inscription(s) **IGI LG737599660**

Comments: This Laboratory Grown Diamond was created by Chemical Vapor Deposition (CVD) growth process. Type IIa



September 29, 2025
 IGI Report Number **LG737599660**
 HEXAGONAL STEP CUT
 LABORATORY GROWN DIAMOND
 8.42 X 5.96 X 3.04 MM
 Carat Weight **0.84 CARAT**
 Color Grade **E**
 Clarity Grade **VVS 2**
 Polish **EXCELLENT**
 Symmetry **EXCELLENT**
 Fluorescence **NONE**
 Inscription(s) **IGI LG737599660**

Comments: This Laboratory Grown Diamond was created by Chemical Vapor Deposition (CVD) growth process. Type IIa



THIS DOCUMENT WAS PRODUCED WITH THE FOLLOWING SECURITY MEASURES: SPECIAL DOCUMENT PAPER, INK SCREENS, WATERMARK, BACKGROUND DESIGNS, HOLOGRAM AND OTHER SECURITY FEATURES NOT LISTED AND DO EXCEED DOCUMENT SECURITY INDUSTRY GUIDELINES.