



ELECTRONIC COPY

LG737598773
Report verification at igi.org



September 29, 2025

IGI Report Number **LG737598773**

Description **LABORATORY GROWN DIAMOND**

Shape and Cutting Style **CUT CORNERED
RECTANGULAR MODIFIED
BRILLIANT**

Measurements **10.09 X 7.02 X 4.78 MM**

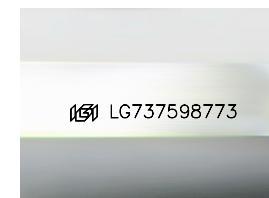
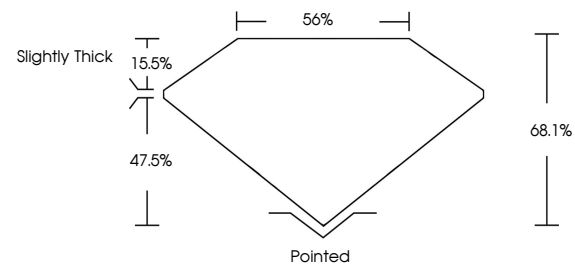
GRADING RESULTS

Carat Weight **3.00 CARATS**

Color Grade **E**

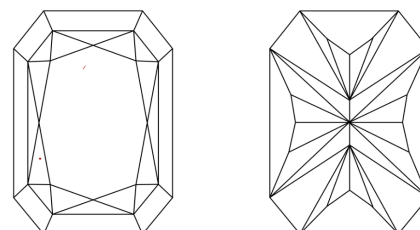
Clarity Grade **VVS 2**

PROPORTIONS



Sample Image Used

CLARITY CHARACTERISTICS



KEY TO SYMBOLS

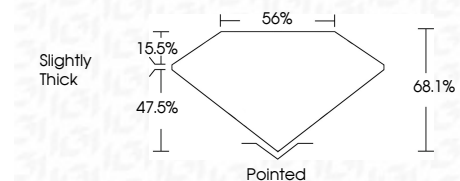
Red symbols indicate internal characteristics.
Green symbols indicate external characteristics.

COLOR

D E F G H I J Faint Very Light Light

CLARITY

FL	IF	VVS ¹⁻²	VS ¹⁻²	SI ¹⁻²	I ¹⁻³
Flawless	Internally Flawless	Very Very Slightly Included	Very Slightly Included	Slightly Included	Included



ADDITIONAL GRADING INFORMATION

Polish **EXCELLENT**

Symmetry **EXCELLENT**

Fluorescence **NONE**

Inscription(s) **IGI LG737598773**

Comments: This Laboratory Grown Diamond was created by Chemical Vapor Deposition (CVD) growth process. Type IIa



IGI



September 29, 2025
IGI Report No LG737598773
CUT CORNERED RECT. MODIFIED BRILLIANT

3.00 CARATS
E

10.09 X 7.02 X 4.78 MM

Carat Weight
Color Grade
Clarity Grade
Table
Girdle
Slightly Thick

Polished
EXCELLENT
EXCELLENT
NONE
IGI LG737598773

Comments: This Laboratory Grown Diamond was created by Chemical Vapor Deposition (CVD) growth process. Type IIa