



ELECTRONIC COPY

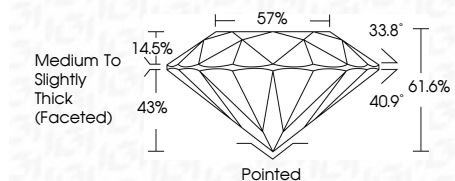
LG737596572
Report verification at igi.org



September 29, 2025
IGI Report Number LG737596572
Description LABORATORY GROWN DIAMOND
Shape and Cutting Style ROUND BRILLIANT
Measurements 7.06 - 7.11 X 4.37 MM

GRADING RESULTS

Carat Weight 1.35 CARAT
Color Grade E
Clarity Grade VS 1
Cut Grade IDEAL



ADDITIONAL GRADING INFORMATION

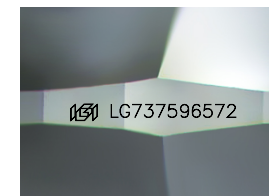
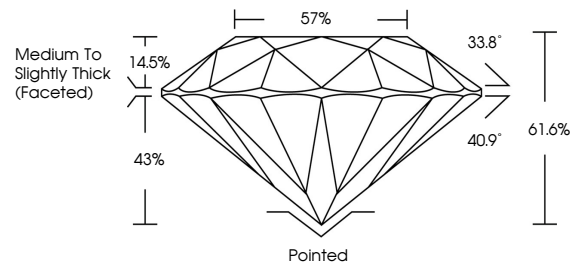
Polish EXCELLENT
Symmetry EXCELLENT
Fluorescence NONE
Inscription(s) IGI LG737596572
Comments: This Laboratory Grown Diamond was created by Chemical Vapor Deposition (CVD) growth process. Type IIa



September 29, 2025
IGI Report No LG737596572
ROUND BRILLIANT
1.35 CARAT E
7.06 - 7.11 X 4.37 MM
Color Grade VS 1
Clarity Grade IDEAL
Depth 61.6%
Table 57%
Medium To Slightly Thick (Faceted)
Pointed
Polish EXCELLENT
Symmetry EXCELLENT
Fluorescence NONE
Inscription(s) IGI LG737596572
Comments: This Laboratory Grown Diamond was created by Chemical Vapor Deposition (CVD) growth process. Type IIa

September 29, 2025
IGI Report Number LG737596572
Description LABORATORY GROWN DIAMOND
Shape and Cutting Style ROUND BRILLIANT
Measurements 7.06 - 7.11 X 4.37 MM
GRADING RESULTS
Carat Weight 1.35 CARAT
Color Grade E
Clarity Grade VS 1
Cut Grade IDEAL

PROPORTIONS



Sample Image Used

COLOR

D E F G H I J Faint Very Light Light

CLARITY

IF WS 1-2 VS 1-2 SI 1-2 I 1-3
Internally Flawless Very Very Slightly Included Very Slightly Included Slightly Included Included

