



ELECTRONIC COPY

LG737596409
Report verification at igi.org



October 9, 2025
IGI Report Number LG737596409
Description LABORATORY GROWN DIAMOND
Shape and Cutting Style CUT CORNERED RECTANGULAR MODIFIED BRILLIANT
Measurements 9.25 X 5.96 X 4.17 MM
GRADING RESULTS
Carat Weight 2.02 CARATS
Color Grade FANCY VIVID BLUE
Clarity Grade SI 1

LABORATORY GROWN DIAMOND REPORT

October 9, 2025
IGI Report Number LG737596409
Description LABORATORY GROWN DIAMOND
Shape and Cutting Style CUT CORNERED RECTANGULAR MODIFIED BRILLIANT
Measurements 9.25 X 5.96 X 4.17 MM

GRADING RESULTS

Carat Weight 2.02 CARATS
Color Grade FANCY VIVID BLUE
Clarity Grade SI 1

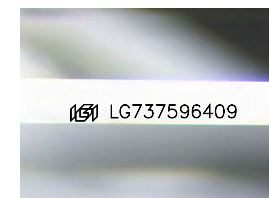
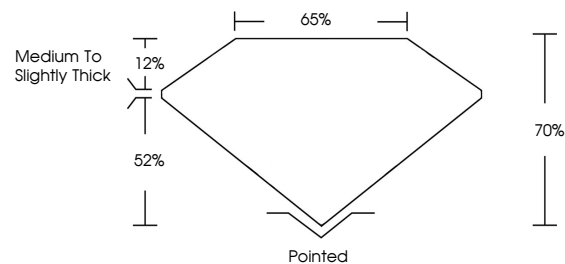
ADDITIONAL GRADING INFORMATION

Polish EXCELLENT
Symmetry EXCELLENT
Fluorescence NONE
Inscription(s) IGI LG737596409

Comments: This Laboratory Grown Diamond was created by Chemical Vapor Deposition (CVD) growth process.
Indications of post-growth treatment.

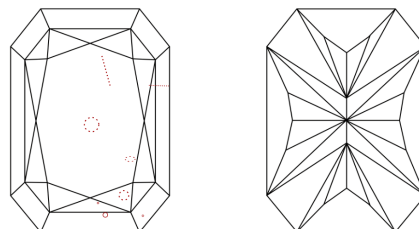
Secondary color: Green

PROPORTIONS



Sample Image Used

CLARITY CHARACTERISTICS



KEY TO SYMBOLS

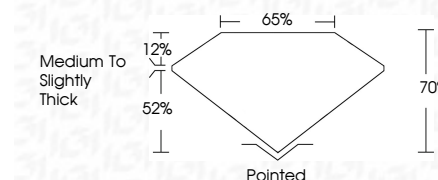
Red symbols indicate internal characteristics.
Green symbols indicate external characteristics.

COLOR

D E F G H I J Faint Very Light Light

CLARITY

FL IF VS 1-2 VS 1-2 SI 1-2 I 1-3
Flawless Internally Flawless Very Very Slightly Included Very Slightly Included Slightly Included Included



ADDITIONAL GRADING INFORMATION

Polish EXCELLENT
Symmetry EXCELLENT
Fluorescence NONE
Inscription(s) IGI LG737596409
Comments: This Laboratory Grown Diamond was created by Chemical Vapor Deposition (CVD) growth process.
Indications of post-growth treatment.
Secondary color: Green



October 9, 2025
IGI Report No LG737596409
CUT CORNERED RECT. MODIFIED BRILLIANT
9.25 X 5.96 X 4.17 MM
2.02 CARATS
FANCY VIVID BLUE
SI 1
70%
65%
Medium to Slightly Thick
Pointed
EXCELLENT
EXCELLENT
NONE
IGI LG737596409
Comments: This Laboratory Grown Diamond was created by Chemical Vapor Deposition (CVD) growth process.
Indications of post-growth treatment.
Secondary color: Green