



ELECTRONIC COPY

LG737594609
Report verification at igi.org



October 7, 2025

IGI Report Number **LG737594609**

Description **LABORATORY GROWN DIAMOND**

Shape and Cutting Style **EMERALD CUT**

Measurements **7.67 X 4.94 X 3.14 MM**

GRADING RESULTS

Carat Weight **1.22 CARAT**

Color Grade **FANCY VIVID BLUE**

Clarity Grade **VVS 2**

LABORATORY GROWN DIAMOND REPORT

October 7, 2025

IGI Report Number **LG737594609**

Description **LABORATORY GROWN DIAMOND**

Shape and Cutting Style **EMERALD CUT**

Measurements **7.67 X 4.94 X 3.14 MM**

GRADING RESULTS

Carat Weight **1.22 CARAT**

Color Grade **FANCY VIVID BLUE**

Clarity Grade **VVS 2**

ADDITIONAL GRADING INFORMATION

Polish **VERY GOOD**

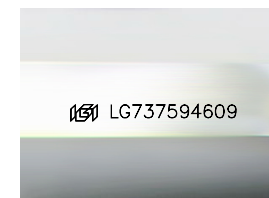
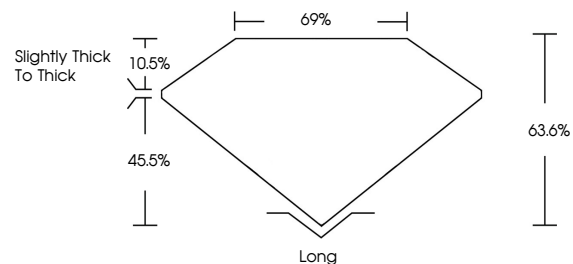
Symmetry **EXCELLENT**

Fluorescence **NONE**

Inscription(s) **IGI LG737594609**

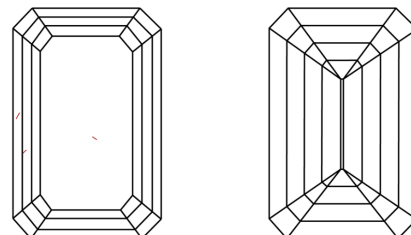
Comments: This Laboratory Grown Diamond was created by Chemical Vapor Deposition (CVD) growth process. Indications of post-growth treatment.

PROPORTIONS



Sample Image Used

CLARITY CHARACTERISTICS



KEY TO SYMBOLS

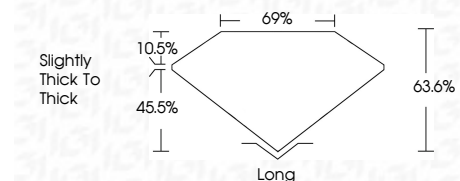
Red symbols indicate internal characteristics.
Green symbols indicate external characteristics.

COLOR

D E F G H I J Faint Very Light Light

CLARITY

FL	IF	VVS ¹⁻²	VS ¹⁻²	SI ¹⁻²	I ¹⁻³
Flawless	Internally Flawless	Very Very Slightly Included	Very Slightly Included	Slightly Included	Included



ADDITIONAL GRADING INFORMATION

Polish **VERY GOOD**

Symmetry **EXCELLENT**

Fluorescence **NONE**

Inscription(s) **IGI LG737594609**

Comments: This Laboratory Grown Diamond was created by Chemical Vapor Deposition (CVD) growth process. Indications of post-growth treatment.



IGI



October 7, 2025
IGI Report No LG737594609
EMERALD CUT

1.22 CARAT
Carat Weight
FANCY VIVID BLUE
Color Grade

VVS 2
Clarity Grade
63.6%
Depth
69%
Table
Slightly thick to thick
Girdle

Long
VERY GOOD
EXCELLENT
NONE
Fluorescence
None
Inscription(s)
IGI LG737594609

Comments: This Laboratory Grown Diamond was created by Chemical Vapor Deposition (CVD) growth process. Indications of post-growth treatment.