



ELECTRONIC COPY

LG737594582
Report verification at igi.org



October 8, 2025
IGI Report Number **LG737594582**
Description **LABORATORY GROWN DIAMOND**
Shape and Cutting Style **CUT CORNERED
RECTANGULAR MODIFIED
BRILLIANT**
Measurements **8.01 X 5.39 X 3.20 MM**
GRADING RESULTS
Carat Weight **1.25 CARAT**
Color Grade **FANCY INTENSE YELLOW**
Clarity Grade **VVS 2**

October 8, 2025
IGI Report Number **LG737594582**
Description **LABORATORY GROWN DIAMOND**
Shape and Cutting Style **CUT CORNERED RECTANGULAR
MODIFIED BRILLIANT**
Measurements **8.01 X 5.39 X 3.20 MM**

GRADING RESULTS

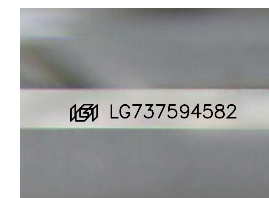
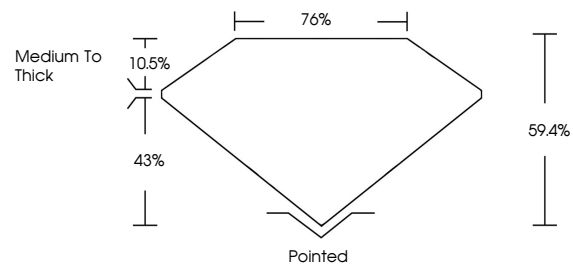
Carat Weight **1.25 CARAT**
Color Grade **FANCY INTENSE YELLOW**
Clarity Grade **VVS 2**

ADDITIONAL GRADING INFORMATION

Polish **VERY GOOD**
Symmetry **EXCELLENT**
Fluorescence **NONE**
Inscription(s) **IGI LG737594582**

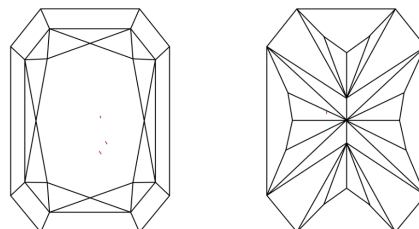
Comments: This Laboratory Grown Diamond was created by Chemical Vapor Deposition (CVD) growth process.
Indications of post-growth treatment.

PROPORTIONS



Sample Image Used

CLARITY CHARACTERISTICS



KEY TO SYMBOLS

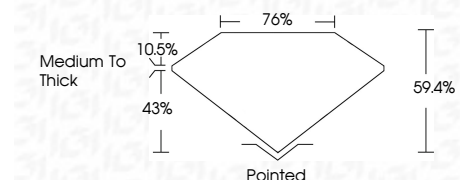
Red symbols indicate internal characteristics.
Green symbols indicate external characteristics.

COLOR

D E F G H I J Faint Very Light Light

CLARITY

FL	IF	VVS ¹⁻²	VS ¹⁻²	SI ¹⁻²	I ¹⁻³
Flawless	Internally Flawless	Very Very Slightly Included	Very Slightly Included	Slightly Included	Included



ADDITIONAL GRADING INFORMATION

Polish **VERY GOOD**
Symmetry **EXCELLENT**
Fluorescence **NONE**
Inscription(s) **IGI LG737594582**
Comments: This Laboratory Grown Diamond was created by Chemical Vapor Deposition (CVD) growth process.
Indications of post-growth treatment.



October 8, 2025
IGI Report No LG737594582
CUT CORNERED RECT. MODIFIED BRILLIANT
8.01 X 5.39 X 3.20 MM
Carat Weight 1.25 CARAT
Color Grade FANCY INTENSE YELLOW
Clarity Grade VVS 2
Depth 59.4%
Table 76%
Girdle Medium to Thick
Culet Pointed
Polish VERY GOOD
Symmetry EXCELLENT
Fluorescence NONE
Inscription(s) IGI LG737594582

Comments: This Laboratory Grown Diamond was created by Chemical Vapor Deposition (CVD) growth process.
Indications of post-growth treatment.