



ELECTRONIC COPY

LG737594579
Report verification at igi.org



October 8, 2025

IGI Report Number **LG737594579**

Description **LABORATORY GROWN DIAMOND**

Shape and Cutting Style **EMERALD CUT**

Measurements **7.60 X 5.23 X 3.42 MM**

GRADING RESULTS

Carat Weight **1.40 CARAT**

Color Grade **FANCY VIVID BLUE**

Clarity Grade **VVS 2**

LABORATORY GROWN DIAMOND REPORT

October 8, 2025

IGI Report Number **LG737594579**

Description **LABORATORY GROWN DIAMOND**

Shape and Cutting Style **EMERALD CUT**

Measurements **7.60 X 5.23 X 3.42 MM**

GRADING RESULTS

Carat Weight **1.40 CARAT**

Color Grade **FANCY VIVID BLUE**

Clarity Grade **VVS 2**

ADDITIONAL GRADING INFORMATION

Polish **VERY GOOD**

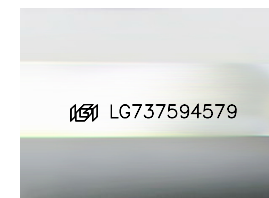
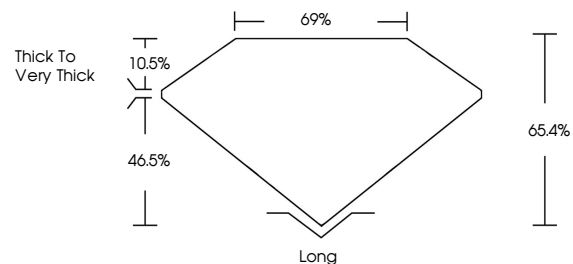
Symmetry **VERY GOOD**

Fluorescence **NONE**

Inscription(s) **IGI LG737594579**

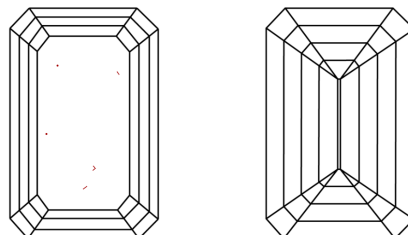
Comments: This Laboratory Grown Diamond was created by Chemical Vapor Deposition (CVD) growth process. Indications of post-growth treatment.

PROPORTIONS



Sample Image Used

CLARITY CHARACTERISTICS



KEY TO SYMBOLS

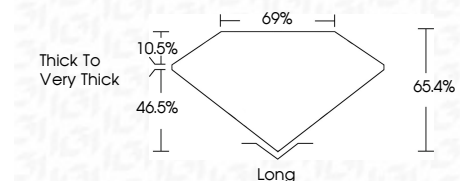
Red symbols indicate internal characteristics.
Green symbols indicate external characteristics.

COLOR

D E F G H I J Faint Very Light Light

CLARITY

FL	IF	VVS ¹⁻²	VS ¹⁻²	SI ¹⁻²	I ¹⁻³
Flawless	Internally Flawless	Very Very Slightly Included	Very Slightly Included	Slightly Included	Included



ADDITIONAL GRADING INFORMATION

Polish **VERY GOOD**

Symmetry **VERY GOOD**

Fluorescence **NONE**

Inscription(s) **IGI LG737594579**

Comments: This Laboratory Grown Diamond was created by Chemical Vapor Deposition (CVD) growth process. Indications of post-growth treatment.



October 8, 2025
IGI Report No LG737594579
EMERALD CUT

1.40 CARAT
Carat Weight
FANCY VIVID BLUE
Color Grade

VVS 2
Clarity Grade
65.4%
Depth
69%
Table
Thick to Very Thick
Girdle

Long
Culet
VERY GOOD
Polish
VERY GOOD
Symmetry
NONE
Fluorescence
IGI LG737594579
Inscription(s)

Comments: This Laboratory Grown Diamond was created by Chemical Vapor Deposition (CVD) growth process. Indications of post-growth treatment.