



ELECTRONIC COPY

LG737594561
Report verification at igi.org



October 7, 2025
IGI Report Number **LG737594561**
Description **LABORATORY GROWN DIAMOND**
Shape and Cutting Style **EMERALD CUT**
Measurements **7.31 X 5.25 X 3.61 MM**
GRADING RESULTS
Carat Weight **1.41 CARAT**
Color Grade **FANCY LIGHT YELLOW**
Clarity Grade **VS 1**

October 7, 2025
IGI Report Number **LG737594561**
Description **LABORATORY GROWN DIAMOND**
Shape and Cutting Style **EMERALD CUT**
Measurements **7.31 X 5.25 X 3.61 MM**

GRADING RESULTS

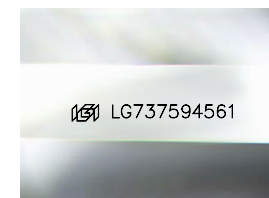
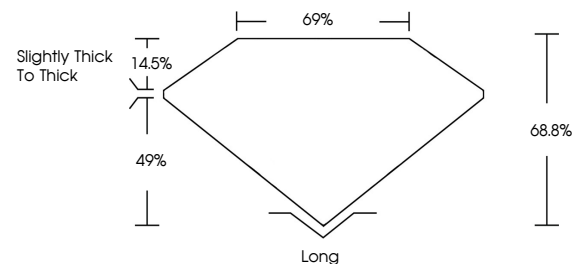
Carat Weight **1.41 CARAT**
Color Grade **FANCY LIGHT YELLOW**
Clarity Grade **VS 1**

ADDITIONAL GRADING INFORMATION

Polish **VERY GOOD**
Symmetry **EXCELLENT**
Fluorescence **VERY SLIGHT**
Inscription(s) **IGI LG737594561**

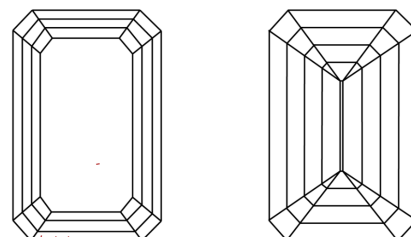
Comments: This Laboratory Grown Diamond was created by Chemical Vapor Deposition (CVD) growth process.
Indications of post-growth treatment.

PROPORTIONS



Sample Image Used

CLARITY CHARACTERISTICS



KEY TO SYMBOLS

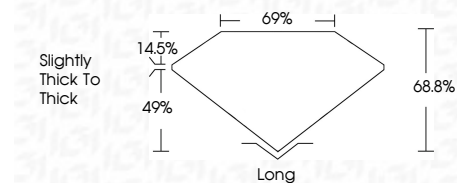
Red symbols indicate internal characteristics.
Green symbols indicate external characteristics.

COLOR

D E F G H I J Faint Very Light Light

CLARITY

FL	IF	VS ¹⁻²	VS ¹⁻²	SI ¹⁻²	I ¹⁻³
Flawless	Internally Flawless	Very Very Slightly Included	Very Slightly Included	Slightly Included	Included



ADDITIONAL GRADING INFORMATION

Polish **VERY GOOD**
Symmetry **EXCELLENT**
Fluorescence **VERY SLIGHT**
Inscription(s) **IGI LG737594561**
Comments: This Laboratory Grown Diamond was created by Chemical Vapor Deposition (CVD) growth process.
Indications of post-growth treatment.



IGI



October 7, 2025
IGI Report No LG737594561
EMERALD CUT
1.41 CARAT
Carat Weight
Color Grade **FANCY LIGHT YELLOW**
Clarity Grade **VS 1**
Depth **68.8%**
Table **69%**
Girdle **Slightly thick to thick**
Culet **Long**
Polish **VERY GOOD**
Symmetry **EXCELLENT**
Fluorescence **VERY SLIGHT**
Inscription(s) **IGI LG737594561**
Comments: This Laboratory Grown Diamond was created by Chemical Vapor Deposition (CVD) growth process.
Indications of post-growth treatment.