



**ELECTRONIC COPY**

LG737594505  
Report verification at igi.org



October 7, 2025  
IGI Report Number **LG737594505**  
Description **LABORATORY GROWN DIAMOND**  
Shape and Cutting Style **EMERALD CUT**  
Measurements **8.12 X 5.21 X 3.25 MM**  
**GRADING RESULTS**  
Carat Weight **1.37 CARAT**  
Color Grade **FANCY YELLOW**  
Clarity Grade **VVS 2**

October 7, 2025  
IGI Report Number **LG737594505**  
Description **LABORATORY GROWN DIAMOND**  
Shape and Cutting Style **EMERALD CUT**  
Measurements **8.12 X 5.21 X 3.25 MM**

**GRADING RESULTS**

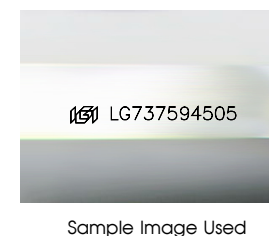
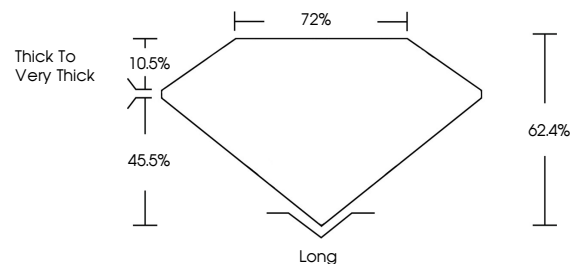
Carat Weight **1.37 CARAT**  
Color Grade **FANCY YELLOW**  
Clarity Grade **VVS 2**

**ADDITIONAL GRADING INFORMATION**

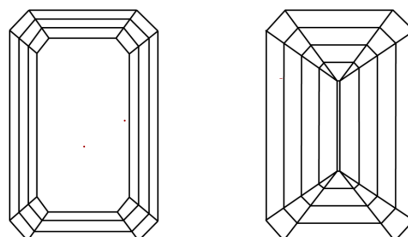
Polish **VERY GOOD**  
Symmetry **VERY GOOD**  
Fluorescence **VERY SLIGHT**  
Inscription(s) **LG737594505**

Comments: This Laboratory Grown Diamond was created by Chemical Vapor Deposition (CVD) growth process.  
Indications of post-growth treatment.

**PROPORTIONS**



**CLARITY CHARACTERISTICS**



**KEY TO SYMBOLS**

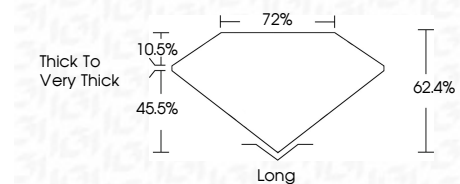
Red symbols indicate internal characteristics.  
Green symbols indicate external characteristics.

**COLOR**

D E F G H I J Faint Very Light Light

**CLARITY**

FL	IF	VVS <sup>1-2</sup>	VS <sup>1-2</sup>	SI <sup>1-2</sup>	I <sup>1-3</sup>
Flawless	Internally Flawless	Very Very Slightly Included	Very Slightly Included	Slightly Included	Included



**ADDITIONAL GRADING INFORMATION**

Polish **VERY GOOD**  
Symmetry **VERY GOOD**  
Fluorescence **VERY SLIGHT**  
Inscription(s) **LG737594505**  
Comments: This Laboratory Grown Diamond was created by Chemical Vapor Deposition (CVD) growth process.  
Indications of post-growth treatment.



October 7, 2025  
IGI Report No **LG737594505**  
**EMERALD CUT**  
**1.37 CARAT**  
Carat Weight  
**FANCY YELLOW**  
Color Grade  
**VVS 2**  
Clarity Grade  
**62.4%**  
Depth  
**72%**  
Table  
Girdle  
**Thick to Very Thick**  
Culet  
Long  
Polish **VERY GOOD**  
Symmetry **VERY GOOD**  
Fluorescence **VERY SLIGHT**  
Inscription(s) **LG737594505**  
Comments: This Laboratory Grown Diamond was created by Chemical Vapor Deposition (CVD) growth process.  
Indications of post-growth treatment.