



**ELECTRONIC COPY**

## LABORATORY GROWN DIAMOND REPORT

October 14, 2025	
IGI Report Number	LG737593013
Description	LABORATORY GROWN DIAMOND
Shape and Cutting Style	PRINCESS CUT
Measurements	6.45 X 6.18 X 4.78 MM

## GRADING RESULTS

Carat Weight	1.70 CARAT
Color Grade	FANCY LIGHT PINK
Clarity Grade	VVS 2

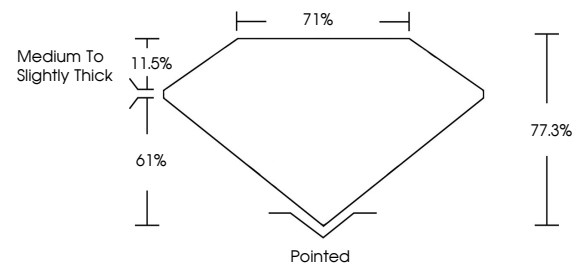
### ADDITIONAL GRADING INFORMATION

Polish	EXCELLENT
Symmetry	VERY GOOD
Fluorescence	SLIGHT
Inscription(s)	151 LG737593013

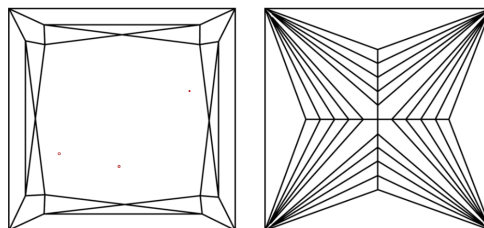
Comments: This Laboratory Grown Diamond was created by Chemical Vapor Deposition (CVD) growth process.  
Indications of post-growth treatment.

LG737593013  
Report verification at [igi.org](http://igi.org)

## PROPORTIONS

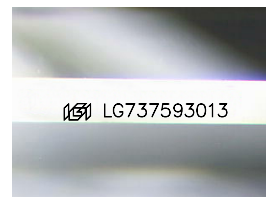


## CLARITY CHARACTERISTICS



### KEY TO SYMBOLS

Red symbols indicate internal characteristics.  
Green symbols indicate external characteristics.



Sample Image Used

## COLOR

D E F G H I J Faint Very Light Light

## CLARITY

FL	IF	VVS <sup>1-2</sup>	VS <sup>1-2</sup>	SI <sup>1-2</sup>	I <sup>1-3</sup>
Flawless	Internally Flawless	Very Very Slightly Included	Very Slightly Included	Slightly Included	Included

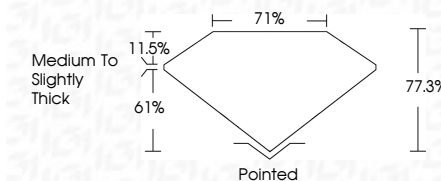
## LABORATORY GROWN DIAMOND REPORT



October 14, 2015	
IGI Report Number	LG737593013
Description	LABORATORY GROWN DIAMOND
Shape and Cutting Style	PRINCESS CUT
Measurements	6.45 X 6.18 X 4.78 MM
<b>GRADING RESULTS</b>	
Carat Weight	1.70 CARAT
Color Grade	FANCY LIGHT PINK
Clarity Grade	VVS 2

### ADDITIONAL GRADING INFORMATION

Polish	EXCELLENT
Symmetry	VERY GOOD
Fluorescence	SLIGHT
Inscription(s)	 LG737593013
<p>Comments: This Laboratory Grown Diamond was created by Chemical Vapor Deposition (CVD) growth process.</p> <p>Indications of post-growth treatment.</p>	



© IGI 2020, International Gemological Institute

FD - 10 20

**www.igi.org**



THIS DOCUMENT WAS PRODUCED WITH THE FOLLOWING SECURITY MEASURES: SPECIAL DOCUMENT PAPER, INK SCREENS, WATERMARK, BACKGROUND DESIGNS, HOLOGRAM AND OTHER SECURITY FEATURES NOT LISTED AND DO EXCEED DOCUMENT SECURITY INDUSTRY GUIDELINES

October 14, 2025  
 CGI Report No LG737593013  
 PRINCESS CLT

<b>4.45 X 6.18 X 4.78 MM</b>	
Carat Weight	<b>1.70 CARAT</b>
Color Grade	<b>FANCY LIGHT PINK</b>
Clarity Grade	<b>VVS 2</b>
Depth	<b>77.5%</b>
Table	<b>71%</b>
Girdle	<b>Medium To Slightly Thick</b>
Culet	<b>Pointed</b>
Polish	<b>EXCELLENT</b>
Symmetry	<b>VERY GOOD</b>
Fluorescence	<b>SLIGHT</b>
Measurements (g)	<b>4.41 (1.72/5.95/6.13)</b>

**Comments:**  
This Laboratory Grown Diamond was created by Chemical Vapor Deposition (CVD) growth process.  
indications of post-growth treatment.