



**LABORATORY GROWN DIAMOND REPORT**

September 29, 2025  
 IGI Report Number **LG737589549**  
 Description **LABORATORY GROWN DIAMOND**  
 Shape and Cutting Style **ROUND BRILLIANT**  
 Measurements **4.89 - 4.91 X 2.98 MM**

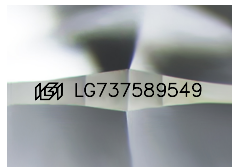
**GRADING RESULTS**

Carat Weight **0.44 CARAT**  
 Color Grade **D**  
 Clarity Grade **VVS 1**  
 Cut Grade **IDEAL**

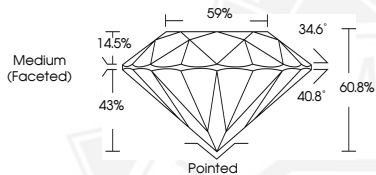
**ADDITIONAL GRADING INFORMATION**

Polish **EXCELLENT**  
 Symmetry **EXCELLENT**  
 Fluorescence **NONE**  
 Inscription(s) **IGI LG737589549**

Comments: As Grown - No indication of post-growth treatment.  
 This Laboratory Grown Diamond was created by High Pressure High  
 Temperature (HPHT) growth process.  
 Type II



Sample Image Used



September 29, 2025  
 IGI Report Number **LG737589549**  
 ROUND BRILLIANT  
 LABORATORY GROWN DIAMOND  
 4.89 - 4.91 X 2.98 MM  
 0.44 CARAT  
 D  
 VVS 1  
 IDEAL  
 EXCELLENT  
 EXCELLENT  
 NONE  
 IGI LG737589549

Comments: As Grown - No indication of post-growth treatment. This Laboratory Grown Diamond was created by High Pressure High Temperature (HPHT) growth process. Type II



September 29, 2025  
 IGI Report Number **LG737589549**  
 ROUND BRILLIANT  
 LABORATORY GROWN DIAMOND  
 4.89 - 4.91 X 2.98 MM  
 0.44 CARAT  
 D  
 VVS 1  
 IDEAL  
 EXCELLENT  
 EXCELLENT  
 NONE  
 IGI LG737589549

Comments: As Grown - No indication of post-growth treatment. This Laboratory Grown Diamond was created by High Pressure High Temperature (HPHT) growth process. Type II



THIS DOCUMENT WAS PRODUCED WITH THE FOLLOWING SECURITY MEASURES: SPECIAL DOCUMENT PAPER, INK SCREENS, WATERMARK, BACKGROUND DESIGNS, HOLOGRAM AND OTHER SECURITY FEATURES NOT LISTED AND DO EXCEED DOCUMENT SECURITY INDUSTRY GUIDELINES.