



October 16, 2025

**IGI Report Number LG737588651**  
**PENTAGON MODIFIED BRILLIANT**  
**LABORATORY GROWN DIAMOND**  
**7.38 X 3.32 X 1.73 MM**

Carat Weight **0.32 CARAT**  
Color Grade **E**  
Clarity Grade **VS 2**  
Polish **VERY GOOD**  
Symmetry **VERY GOOD**  
Fluorescence **NONE**  
Inscription(s) **IGI LG737588651**

Comments: This Laboratory Grown Diamond was created by Chemical Vapor Deposition (CVD) growth process. Type IIa

**LABORATORY GROWN DIAMOND REPORT**

October 16, 2025  
IGI Report Number **LG737588651**  
Description **LABORATORY GROWN DIAMOND**  
Shape and Cutting Style **PENTAGON MODIFIED BRILLIANT**  
Measurements **7.38 X 3.32 X 1.73 MM**

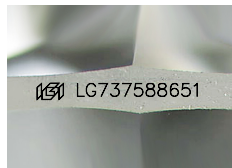
**GRADING RESULTS**

Carat Weight **0.32 CARAT**  
Color Grade **E**  
Clarity Grade **VS 2**

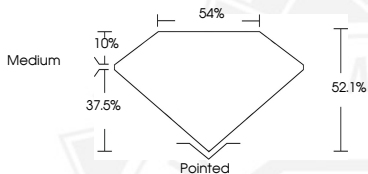
**ADDITIONAL GRADING INFORMATION**

Polish **VERY GOOD**  
Symmetry **VERY GOOD**  
Fluorescence **NONE**  
Inscription(s) **IGI LG737588651**

Comments: This Laboratory Grown Diamond was created by Chemical Vapor Deposition (CVD) growth process.  
Type IIa



Sample Image Used



October 16, 2025

**IGI Report Number LG737588651**  
**PENTAGON MODIFIED BRILLIANT**  
**LABORATORY GROWN DIAMOND**  
**7.38 X 3.32 X 1.73 MM**

Carat Weight **0.32 CARAT**  
Color Grade **E**  
Clarity Grade **VS 2**  
Polish **VERY GOOD**  
Symmetry **VERY GOOD**  
Fluorescence **NONE**  
Inscription(s) **IGI LG737588651**

Comments: This Laboratory Grown Diamond was created by Chemical Vapor Deposition (CVD) growth process. Type IIa



THIS DOCUMENT WAS PRODUCED WITH THE FOLLOWING SECURITY MEASURES: SPECIAL DOCUMENT PAPER, INK SCREENS, WATERMARK, BACKGROUND DESIGNS, HOLOGRAM AND OTHER SECURITY FEATURES NOT LISTED AND DO EXCEED DOCUMENT SECURITY INDUSTRY GUIDELINES.