



ELECTRONIC COPY

LG737588471  
Report verification at igi.org



October 6, 2025  
IGI Report Number **LG737588471**  
Description **LABORATORY GROWN DIAMOND**  
Shape and Cutting Style **SQUARE CUSHION MODIFIED BRILLIANT**  
Measurements **6.47 X 6.47 X 4.11 MM**  
**GRADING RESULTS**  
Carat Weight **1.50 CARAT**  
Color Grade **FANCY LIGHT YELLOW**  
Clarity Grade **VVS 2**

LABORATORY GROWN DIAMOND REPORT

October 6, 2025  
IGI Report Number **LG737588471**  
Description **LABORATORY GROWN DIAMOND**  
Shape and Cutting Style **SQUARE CUSHION MODIFIED BRILLIANT**  
Measurements **6.47 X 6.47 X 4.11 MM**

GRADING RESULTS

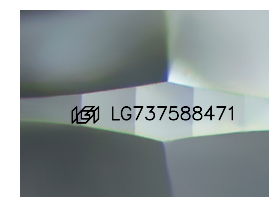
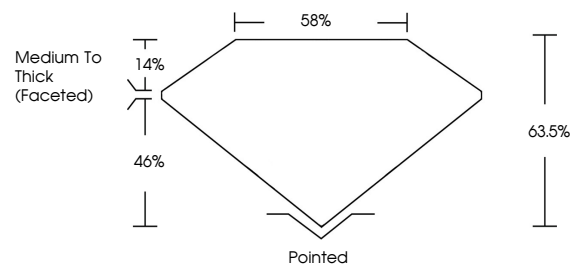
Carat Weight **1.50 CARAT**  
Color Grade **FANCY LIGHT YELLOW**  
Clarity Grade **VVS 2**

ADDITIONAL GRADING INFORMATION

Polish **EXCELLENT**  
Symmetry **EXCELLENT**  
Fluorescence **NONE**  
Inscription(s) **IGI LG737588471**

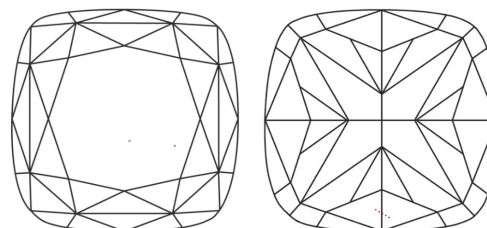
Comments: This Laboratory Grown Diamond was created by Chemical Vapor Deposition (CVD) growth process.

PROPORTIONS



Sample Image Used

CLARITY CHARACTERISTICS



KEY TO SYMBOLS

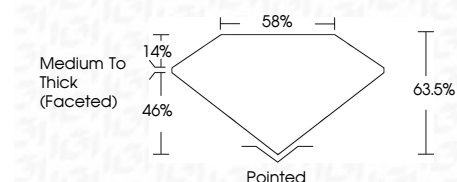
Red symbols indicate internal characteristics.  
Green symbols indicate external characteristics.

COLOR

D E F G H I J Faint Very Light Light

CLARITY

FL IF VVS<sup>1-2</sup> VS<sup>1-2</sup> SI<sup>1-2</sup> I<sup>1-3</sup>  
Flawless Internally Flawless Very Very Slightly Included Very Slightly Included Slightly Included Included



ADDITIONAL GRADING INFORMATION

Polish **EXCELLENT**  
Symmetry **EXCELLENT**  
Fluorescence **NONE**  
Inscription(s) **IGI LG737588471**  
Comments: This Laboratory Grown Diamond was created by Chemical Vapor Deposition (CVD) growth process.



October 6, 2025  
IGI Report No **LG737588471**  
**SQUARE CUSHION MODIFIED BRILLIANT**  
**6.47 X 6.47 X 4.11 MM**  
Carat Weight **1.50 CARAT**  
Color Grade **FANCY LIGHT YELLOW**  
Clarity Grade **VVS 2**  
Depth **63.5%**  
Table **58%**  
Girdle **Medium To Thick (Faceted)**  
Culet **Pointed**  
Polish **EXCELLENT**  
Symmetry **EXCELLENT**  
Fluorescence **NONE**  
Inscription(s) **IGI LG737588471**  
Comments: This Laboratory Grown Diamond was created by Chemical Vapor Deposition (CVD) growth process.