



October 8, 2025

IGI Report Number **LG737587310**

**HEART BRILLIANT
LABORATORY GROWN DIAMOND
6.25 X 6.74 X 3.56 MM**

Carat Weight **0.93 CARAT**
Color Grade **FANCY VIVID GREEN**
Clarity Grade **VS 2**
Polish **EXCELLENT**
Symmetry **EXCELLENT**
Fluorescence **NONE**
Inscription(s) **IGI LG737587310**

Comments: This Laboratory Grown Diamond was created by Chemical Vapor Deposition (CVD) growth process. Indications of post-growth treatment.

LABORATORY GROWN DIAMOND REPORT

October 8, 2025
IGI Report Number **LG737587310**
Description **LABORATORY GROWN DIAMOND**
Shape and Cutting Style **HEART BRILLIANT**
Measurements **6.25 X 6.74 X 3.56 MM**

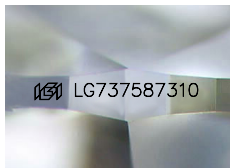
GRADING RESULTS

Carat Weight **0.93 CARAT**
Color Grade **FANCY VIVID GREEN**
Clarity Grade **VS 2**

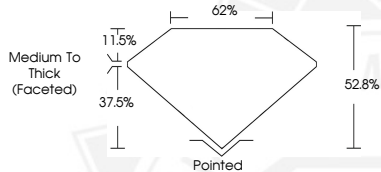
ADDITIONAL GRADING INFORMATION

Polish **EXCELLENT**
Symmetry **EXCELLENT**
Fluorescence **NONE**
Inscription(s) **IGI LG737587310**

Comments: This Laboratory Grown Diamond was created by Chemical Vapor Deposition (CVD) growth process. Indications of post-growth treatment.



Sample Image Used



October 8, 2025

IGI Report Number **LG737587310**

**HEART BRILLIANT
LABORATORY GROWN DIAMOND
6.25 X 6.74 X 3.56 MM**

Carat Weight **0.93 CARAT**
Color Grade **FANCY VIVID GREEN**
Clarity Grade **VS 2**
Polish **EXCELLENT**
Symmetry **EXCELLENT**
Fluorescence **NONE**
Inscription(s) **IGI LG737587310**

Comments: This Laboratory Grown Diamond was created by Chemical Vapor Deposition (CVD) growth process. Indications of post-growth treatment.



THIS DOCUMENT WAS PRODUCED WITH THE FOLLOWING SECURITY MEASURES: SPECIAL DOCUMENT PAPER, INK SCREENS, WATERMARK, BACKGROUND DESIGNS, HOLOGRAM AND OTHER SECURITY FEATURES NOT LISTED AND DO EXCEED DOCUMENT SECURITY INDUSTRY GUIDELINES.