



ELECTRONIC COPY

LG737584338
Report verification at igi.org



September 27, 2025

IGI Report Number **LG737584338**

Description **LABORATORY GROWN DIAMOND**

Shape and Cutting Style **ROUND BRILLIANT**

Measurements **11.29 - 11.36 X 6.97 MM**

GRADING RESULTS

Carat Weight **5.52 CARATS**

Color Grade **E**

Clarity Grade **VVS 2**

Cut Grade **EXCELLENT**

September 27, 2025
IGI Report Number **LG737584338**
Description **LABORATORY GROWN DIAMOND**
Shape and Cutting Style **ROUND BRILLIANT**
Measurements **11.29 - 11.36 X 6.97 MM**

GRADING RESULTS

Carat Weight **5.52 CARATS**

Color Grade **E**

Clarity Grade **VVS 2**

Cut Grade **EXCELLENT**

ADDITIONAL GRADING INFORMATION

Polish **EXCELLENT**

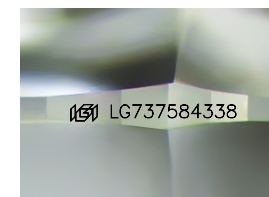
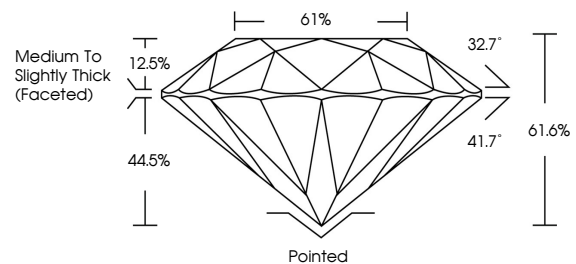
Symmetry **EXCELLENT**

Fluorescence **NONE**

Inscription(s) **LG737584338**

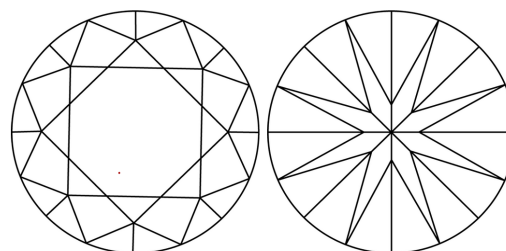
Comments: This Laboratory Grown Diamond was created by Chemical Vapor Deposition (CVD) growth process. Type IIa

PROPORTIONS



Sample Image Used

CLARITY CHARACTERISTICS



KEY TO SYMBOLS

Red symbols indicate internal characteristics.
Green symbols indicate external characteristics.

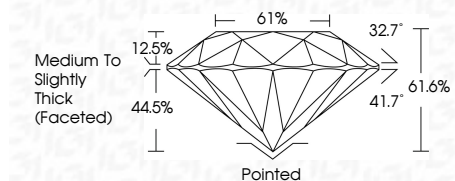
COLOR

D E F G H I J Faint Very Light Light

CLARITY

IF WS¹⁻² VS¹⁻² SI¹⁻² I¹⁻³

Internally Flawless Very Very Slightly Included Very Slightly Included Slightly Included Included



ADDITIONAL GRADING INFORMATION

Polish **EXCELLENT**

Symmetry **EXCELLENT**

Fluorescence **NONE**

Inscription(s) **LG737584338**

Comments: This Laboratory Grown Diamond was created by Chemical Vapor Deposition (CVD) growth process. Type IIa



IGI



| | | | | | | | | | | | | | | |
|--------------------|---------------------------|-----------------|-------------|-------|-------|-----------|--------|----------|------------------------------------|----------------|-----------------------------------------------------------------------------------------------------------------|-----------|------|-------------|
| September 27, 2025 | IGI Report No LG737584338 | ROUND BRILLIANT | 5.52 CARATS | E | VVS 2 | EXCELLENT | 61.6% | 61% | Medium To Slightly Thick (Faceted) | Pointed | EXCELLENT | EXCELLENT | NONE | LG737584338 |
| Carat Weight | Color Grade | Clarity Grade | Depth | Table | Grade | Culet | Polish | Symmetry | Fluorescence | Inscription(s) | Comments: This Laboratory Grown Diamond was created by Chemical Vapor Deposition (CVD) growth process. Type IIa | | | |