



ELECTRONIC COPY

LABORATORY GROWN DIAMOND REPORT

September 27, 2025	
IGI Report Number	LG737579130
Description	LABORATORY GROWN DIAMOND
Shape and Cutting Style	PRINCESS CUT
Measurements	6.40 X 6.35 X 4.58 MM
GRADING RESULTS	
Carat Weight	1.64 CARAT
Color Grade	E
Clarity Grade	VS 1

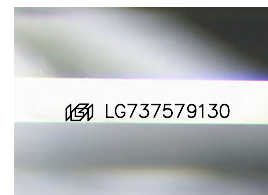
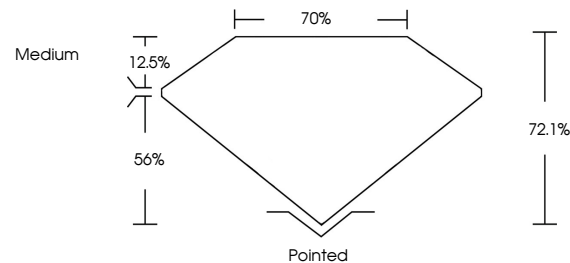
ADDITIONAL GRADING INFORMATION

Polish	EXCELLENT
Symmetry	EXCELLENT
Fluorescence	NONE
Inscription(s)	 LG737579130

Comments: This Laboratory Grown Diamond was created by Chemical Vapor Deposition (CVD) growth process.
Type IIa

LG737579130
Report verification at igi.org

PROPORTIONS



Sample Image Used

COLOR

D E F G H I J Faint Very Light Light

CLARITY

IF	VVS ¹⁻²	VS ¹⁻²	SI ¹⁻²	I ¹⁻³
Internally Flawless	Very Very Slightly Included	Very Slightly Included	Slightly Included	Included

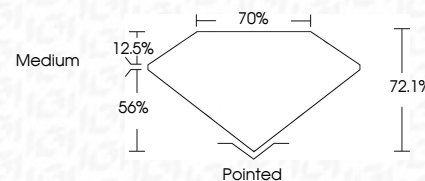
LABORATORY GROWN DIAMOND REPORT



September 27, 2025	
IGI Report Number	LG737579130
Description	LABORATORY GROWN DIAMOND
Shape and Cutting Style	PRINCESS CUT
Measurements	6.40 X 6.35 X 4.58 MM
GRADING RESULTS	
Carat Weight	1.64 CARAT
Color Grade	E
Clarity Grade	VS 1

ADDITIONAL GRADING INFORMATION

Polish	EXCELLENT
Symmetry	EXCELLENT
Fluorescence	NONE
Inscription(s)	 LG737579130
<p>Comments: This Laboratory Grown Diamond was created by Chemical Vapor Deposition (CVD) growth process.</p> <p>Type IIa</p>	



© IGI 2020, International Gemological Institute

FD - 10 20



THIS DOCUMENT WAS PRODUCED WITH THE FOLLOWING SECURITY MEASURES: SPECIAL DOCUMENT PAPER, INK SCREENS, WATERMARK, BACKGROUND DESIGNS, HOLOGRAM, AND OTHER SECURITY FEATURES NOT LISTED AND DO EXCEED DOCUMENT SECURITY INDUSTRY GUIDELINES.

www.igi.org

September 27, 2025
 IGI Report No LG737579130
 PRINCESS CIT

IGI Report No L1
BRINCESS CIT

FINANCIAL

Carat Weight

Color Grade

Clarity Grade

Depth

Girdle

Culet

Polish
Symmetry

Fluorescence

Inscription(s)

Comments:
This Laboratory

created by Ch...

(CVD) growth p...

Type IIa