



September 30, 2025

IGI Report Number **LG737568914**

**ROUND BRILLIANT  
LABORATORY GROWN DIAMOND  
4.80 - 4.83 X 2.91 MM**

Carat Weight **0.41 CARAT**  
Color Grade **D**  
Clarity Grade **I.F.**  
Cut Grade **IDEAL**  
Polish **EXCELLENT**  
Symmetry **EXCELLENT**  
Fluorescence **NONE**  
Inscription(s) **IGI LG737568914**

Comments: As Grown - No indication of post-growth treatment. This Laboratory Grown Diamond was created by High Pressure High Temperature (HPHT) growth process. Type II

**LABORATORY GROWN DIAMOND REPORT**

September 30, 2025

IGI Report Number **LG737568914**

Description **LABORATORY GROWN DIAMOND**

Shape and Cutting Style **ROUND BRILLIANT**

Measurements **4.80 - 4.83 X 2.91 MM**

**GRADING RESULTS**

Carat Weight **0.41 CARAT**

Color Grade **D**

Clarity Grade **INTERNALLY FLAWLESS**

Cut Grade **IDEAL**

**ADDITIONAL GRADING INFORMATION**

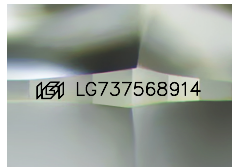
Polish **EXCELLENT**

Symmetry **EXCELLENT**

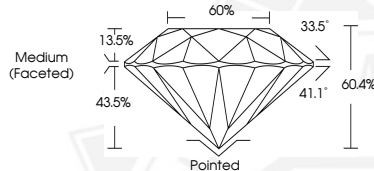
Fluorescence **NONE**

Inscription(s) **IGI LG737568914**

Comments: As Grown - No indication of post-growth treatment. This Laboratory Grown Diamond was created by High Pressure High Temperature (HPHT) growth process. Type II



Sample Image Used



September 30, 2025

IGI Report Number **LG737568914**

**ROUND BRILLIANT  
LABORATORY GROWN DIAMOND  
4.80 - 4.83 X 2.91 MM**

Carat Weight **0.41 CARAT**  
Color Grade **D**  
Clarity Grade **I.F.**  
Cut Grade **IDEAL**  
Polish **EXCELLENT**  
Symmetry **EXCELLENT**  
Fluorescence **NONE**  
Inscription(s) **IGI LG737568914**

Comments: As Grown - No indication of post-growth treatment. This Laboratory Grown Diamond was created by High Pressure High Temperature (HPHT) growth process. Type II



THIS DOCUMENT WAS PRODUCED WITH THE FOLLOWING SECURITY MEASURES: SPECIAL DOCUMENT PAPER, INK SCREENS, WATERMARK, BACKGROUND DESIGNS, HOLOGRAM AND OTHER SECURITY FEATURES NOT LISTED AND DO EXCEED DOCUMENT SECURITY INDUSTRY GUIDELINES.