



September 26, 2025

IGI Report Number **LG737568829**

**ROUND BRILLIANT  
LABORATORY GROWN DIAMOND**

**4.41 - 4.43 X 2.73 MM**

Carat Weight **0.33 CARAT**  
Color Grade **E**  
Clarity Grade **I.F.**  
Cut Grade **IDEAL**  
Polish **EXCELLENT**  
Symmetry **EXCELLENT**  
Fluorescence **NONE**  
Inscription(s) **IGI LG737568829**

Comments: As Grown - No indication of post-growth treatment. This Laboratory Grown Diamond was created by High Pressure High Temperature (HPHT) growth process. Type II

**LABORATORY GROWN DIAMOND REPORT**

September 26, 2025

IGI Report Number **LG737568829**

Description **LABORATORY GROWN DIAMOND**

Shape and Cutting Style **ROUND BRILLIANT**

Measurements **4.41 - 4.43 X 2.73 MM**

**GRADING RESULTS**

Carat Weight **0.33 CARAT**

Color Grade **E**

Clarity Grade **INTERNALLY FLAWLESS**

Cut Grade **IDEAL**

**ADDITIONAL GRADING INFORMATION**

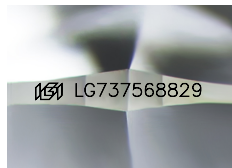
Polish **EXCELLENT**

Symmetry **EXCELLENT**

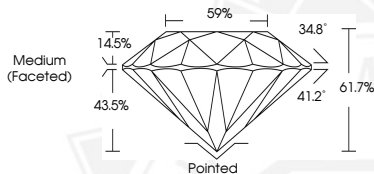
Fluorescence **NONE**

Inscription(s) **IGI LG737568829**

Comments: As Grown - No indication of post-growth treatment. This Laboratory Grown Diamond was created by High Pressure High Temperature (HPHT) growth process. Type II



Sample Image Used



September 26, 2025

IGI Report Number **LG737568829**

**ROUND BRILLIANT  
LABORATORY GROWN DIAMOND**

**4.41 - 4.43 X 2.73 MM**

Carat Weight **0.33 CARAT**  
Color Grade **E**  
Clarity Grade **I.F.**  
Cut Grade **IDEAL**  
Polish **EXCELLENT**  
Symmetry **EXCELLENT**  
Fluorescence **NONE**  
Inscription(s) **IGI LG737568829**

Comments: As Grown - No indication of post-growth treatment. This Laboratory Grown Diamond was created by High Pressure High Temperature (HPHT) growth process. Type II



THIS DOCUMENT WAS PRODUCED WITH THE FOLLOWING SECURITY MEASURES: SPECIAL DOCUMENT PAPER, INK SCREENS, WATERMARK, BACKGROUND DESIGNS, HOLOGRAM AND OTHER SECURITY FEATURES NOT LISTED AND DO EXCEED DOCUMENT SECURITY INDUSTRY GUIDELINES.