



**ELECTRONIC COPY**

LG737565631  
Report verification at igi.org



October 14, 2025  
IGI Report Number **LG737565631**  
Description **LABORATORY GROWN DIAMOND**  
Shape and Cutting Style **SQUARE CUSHION MODIFIED BRILLIANT**  
Measurements **6.23 X 5.90 X 4.23 MM**  
**GRADING RESULTS**  
Carat Weight **1.29 CARAT**  
Color Grade **LIGHT YELLOW**  
Clarity Grade **VVS 2**

October 14, 2025  
IGI Report Number **LG737565631**  
Description **LABORATORY GROWN DIAMOND**  
Shape and Cutting Style **SQUARE CUSHION MODIFIED BRILLIANT**  
Measurements **6.23 X 5.90 X 4.23 MM**

**GRADING RESULTS**

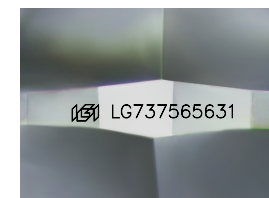
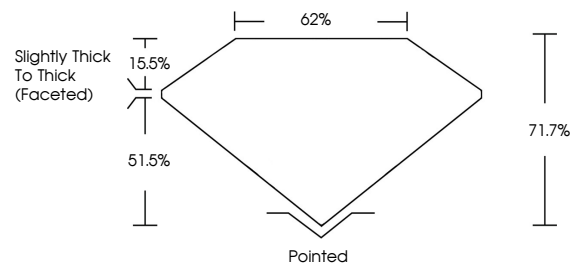
Carat Weight **1.29 CARAT**  
Color Grade **LIGHT YELLOW**  
Clarity Grade **VVS 2**

**ADDITIONAL GRADING INFORMATION**

Polish **EXCELLENT**  
Symmetry **EXCELLENT**  
Fluorescence **NONE**  
Inscription(s) **IGI LG737565631**

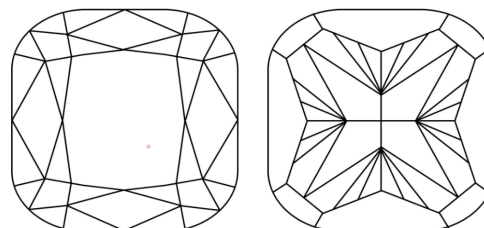
Comments: This Laboratory Grown Diamond was created by Chemical Vapor Deposition (CVD) growth process.

**PROPORTIONS**



Sample Image Used

**CLARITY CHARACTERISTICS**



**KEY TO SYMBOLS**

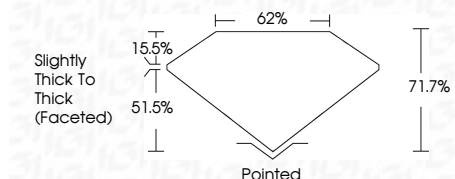
Red symbols indicate internal characteristics.  
Green symbols indicate external characteristics.

**COLOR**

D E F G H I J Faint Very Light Light

**CLARITY**

FL	IF	VVS <sup>1-2</sup>	VS <sup>1-2</sup>	SI <sup>1-2</sup>	I <sup>1-3</sup>
Flawless	Internally Flawless	Very Very Slightly Included	Very Slightly Included	Slightly Included	Included



**ADDITIONAL GRADING INFORMATION**

Polish **EXCELLENT**  
Symmetry **EXCELLENT**  
Fluorescence **NONE**  
Inscription(s) **IGI LG737565631**  
Comments: This Laboratory Grown Diamond was created by Chemical Vapor Deposition (CVD) growth process.



October 14, 2025  
IGI Report No LG737565631  
**SQUARE CUSHION MODIFIED BRILLIANT**  
6.23 X 5.90 X 4.23 MM  
1.29 CARAT  
LIGHT YELLOW  
VVS 2  
71.7%  
62%  
Slightly Thick To Thick (Faceted)  
Pointed  
EXCELLENT  
EXCELLENT  
NONE  
IGI LG737565631  
Comments: This Laboratory Grown Diamond was created by Chemical Vapor Deposition (CVD) growth process.