



**ELECTRONIC COPY**

LG737565568  
Report verification at igi.org



September 27, 2025

IGI Report Number **LG737565568**

Description **LABORATORY GROWN DIAMOND**

Shape and Cutting Style **EMERALD CUT**

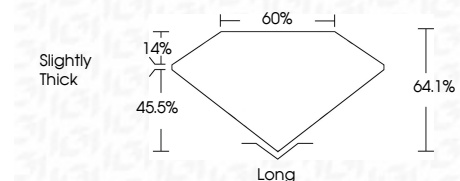
Measurements **10.14 X 7.19 X 4.61 MM**

**GRADING RESULTS**

Carat Weight **3.71 CARATS**

Color Grade **D**

Clarity Grade **VVS 2**



**ADDITIONAL GRADING INFORMATION**

Polish **EXCELLENT**

Symmetry **EXCELLENT**

Fluorescence **NONE**

Inscription(s) **IGI LG737565568**

Comments: This Laboratory Grown Diamond was created by Chemical Vapor Deposition (CVD) growth process. Type IIa



September 27, 2025	IGI Report No LG737565568	EMERALD CUT	3.71 CARATS	D	VVS 2	64.1%	60%	Slightly Thick	Long	EXCELLENT	EXCELLENT	NONE	IGI LG737565568
IGI Report No LG737565568	EMERALD CUT	10.14 X 7.19 X 4.61 MM	3.71 CARATS	D	VVS 2	64.1%	60%	Slightly Thick	Long	EXCELLENT	EXCELLENT	NONE	IGI LG737565568

Comments: This Laboratory Grown Diamond was created by Chemical Vapor Deposition (CVD) growth process. Type IIa

September 27, 2025  
IGI Report Number **LG737565568**  
Description **LABORATORY GROWN DIAMOND**  
Shape and Cutting Style **EMERALD CUT**  
Measurements **10.14 X 7.19 X 4.61 MM**

**GRADING RESULTS**

Carat Weight **3.71 CARATS**

Color Grade **D**

Clarity Grade **VVS 2**

**ADDITIONAL GRADING INFORMATION**

Polish **EXCELLENT**

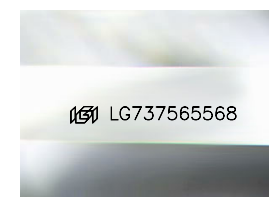
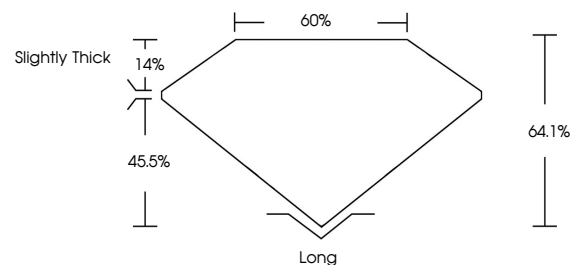
Symmetry **EXCELLENT**

Fluorescence **NONE**

Inscription(s) **IGI LG737565568**

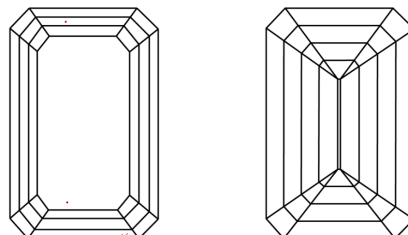
Comments: This Laboratory Grown Diamond was created by Chemical Vapor Deposition (CVD) growth process. Type IIa

**PROPORTIONS**



Sample Image Used

**CLARITY CHARACTERISTICS**



**KEY TO SYMBOLS**

Red symbols indicate internal characteristics.  
Green symbols indicate external characteristics.

**COLOR**

D E F G H I J Faint Very Light Light

**CLARITY**

IF	VS <sup>1-2</sup>	VVS <sup>1-2</sup>	S <sup>1-2</sup>	I <sup>1-3</sup>
Internally Flawless	Very Very Slightly Included	Very Slightly Included	Slightly Included	Included

