



ELECTRONIC COPY

LG737563566
Report verification at igi.org



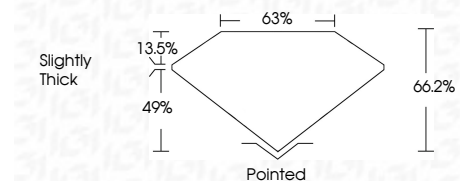
September 26, 2025
IGI Report Number **LG737563566**
Description **LABORATORY GROWN DIAMOND**

Shape and Cutting Style **CUT CORNERED
RECTANGULAR MODIFIED
BRILLIANT**

Measurements **15.47 X 10.70 X 7.08 MM**

GRADING RESULTS

Carat Weight **10.04 CARATS**
Color Grade **G**
Clarity Grade **VVS 2**



ADDITIONAL GRADING INFORMATION

Polish **EXCELLENT**
Symmetry **EXCELLENT**
Fluorescence **NONE**
Inscription(s) **IGI LG737563566**

Comments: This Laboratory Grown Diamond was created by Chemical Vapor Deposition (CVD) growth process. Type IIa



September 26, 2025
IGI Report Number **LG737563566**
Description **LABORATORY GROWN DIAMOND**
Shape and Cutting Style **CUT CORNERED RECTANGULAR
MODIFIED BRILLIANT**
Measurements **15.47 X 10.70 X 7.08 MM**

GRADING RESULTS

Carat Weight **10.04 CARATS**
Color Grade **G**
Clarity Grade **VVS 2**

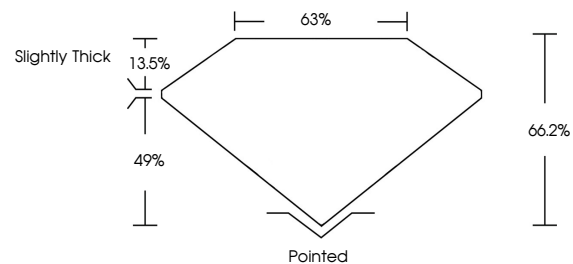
ADDITIONAL GRADING INFORMATION

Polish **EXCELLENT**
Symmetry **EXCELLENT**
Fluorescence **NONE**

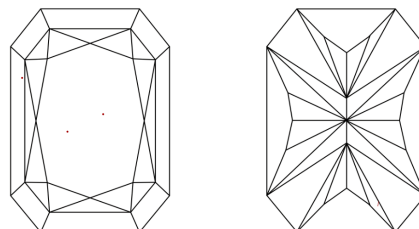
Inscription(s) **IGI LG737563566**

Comments: This Laboratory Grown Diamond was created by Chemical Vapor Deposition (CVD) growth process. Type IIa

PROPORTIONS

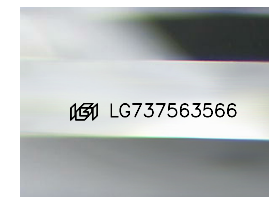


CLARITY CHARACTERISTICS



KEY TO SYMBOLS

Red symbols indicate internal characteristics.
Green symbols indicate external characteristics.



Sample Image Used

COLOR

D E F G H I J Faint Very Light Light

CLARITY

IF	VS ¹⁻²	VS ¹⁻²	SI ¹⁻²	I ¹⁻³
Internally Flawless	Very Very Slightly Included	Very Slightly Included	Slightly Included	Included



September 26, 2025
IGI Report No LG737563566
CUT CORNERED RECT. MODIFIED BRILLIANT
15.47 X 10.70 X 7.08 MM
Carat Weight 10.04 CARATS
Color Grade G
Clarity Grade VVS 2
Depth 66.2%
Table 63%
Girdle Slightly Thick
Culet Pointed
Polish EXCELLENT
Symmetry EXCELLENT
Fluorescence NONE
Inscription(s) IGI LG737563566
Comments: This Laboratory Grown Diamond was created by Chemical Vapor Deposition (CVD) growth process. Type IIa