



ELECTRONIC COPY

LG737563448
Report verification at igi.org



October 4, 2025
IGI Report Number **LG737563448**
Description **LABORATORY GROWN DIAMOND**
Shape and Cutting Style **MARQUISE MODIFIED BRILLIANT**
Measurements **12.32 X 6.07 X 3.82 MM**
GRADING RESULTS
Carat Weight **1.77 CARAT**
Color Grade **FANCY VIVID PINK**
Clarity Grade **VVS 2**

LABORATORY GROWN DIAMOND REPORT

October 4, 2025
IGI Report Number **LG737563448**
Description **LABORATORY GROWN DIAMOND**
Shape and Cutting Style **MARQUISE MODIFIED BRILLIANT**
Measurements **12.32 X 6.07 X 3.82 MM**

GRADING RESULTS

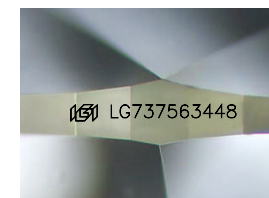
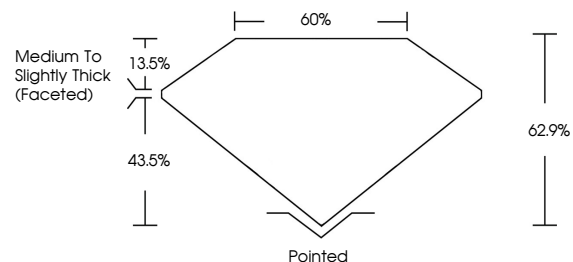
Carat Weight **1.77 CARAT**
Color Grade **FANCY VIVID PINK**
Clarity Grade **VVS 2**

ADDITIONAL GRADING INFORMATION

Polish **EXCELLENT**
Symmetry **EXCELLENT**
Fluorescence **SLIGHT**
Inscription(s) **LG737563448**

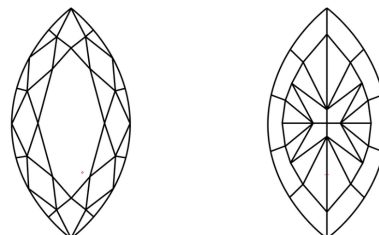
Comments: This Laboratory Grown Diamond was created by Chemical Vapor Deposition (CVD) growth process.
Indications of post-growth treatment.

PROPORTIONS



Sample Image Used

CLARITY CHARACTERISTICS



KEY TO SYMBOLS

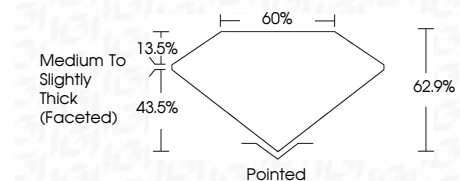
Red symbols indicate internal characteristics.
Green symbols indicate external characteristics.

COLOR

D E F G H I J Faint Very Light Light

CLARITY

FL	IF	VVS ¹⁻²	VS ¹⁻²	SI ¹⁻²	I ¹⁻³
Flawless	Internally Flawless	Very Very Slightly Included	Very Slightly Included	Slightly Included	Included



ADDITIONAL GRADING INFORMATION

Polish **EXCELLENT**
Symmetry **EXCELLENT**
Fluorescence **SLIGHT**
Inscription(s) **LG737563448**
Comments: This Laboratory Grown Diamond was created by Chemical Vapor Deposition (CVD) growth process.
Indications of post-growth treatment.



October 4, 2025
IGI Report No LG737563448
MARQUISE MODIFIED BRILLIANT
12.32 X 6.07 X 3.82 MM
1.77 CARAT
FANCY VIVID PINK
VVS 2
62.9%
60%
Medium to Slightly Thick (Faceted)
Pointed
EXCELLENT
EXCELLENT
SLIGHT
Inscription(s) LG737563448
Comments: This Laboratory Grown Diamond was created by Chemical Vapor Deposition (CVD) growth process.
Indications of post-growth treatment.