

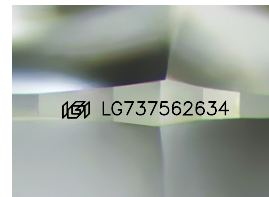
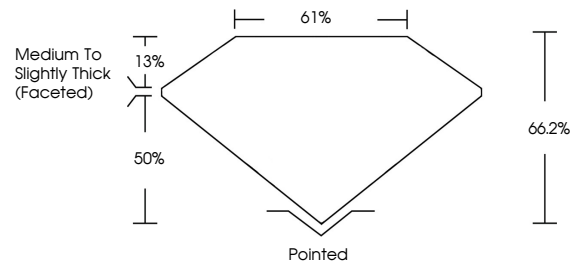


**INTERNATIONAL
GEMOLOGICAL
INSTITUTE**

ELECTRONIC COPY

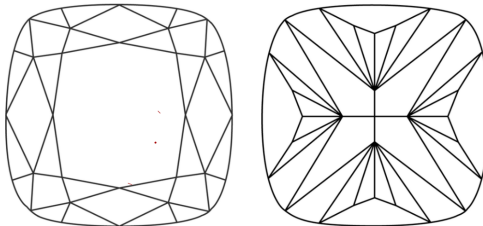
LG737562634
Report verification at igi.org

PROPORTIONS



Sample Image Used

CLARITY CHARACTERISTICS



KEY TO SYMBOLS

Red symbols indicate internal characteristics.
Green symbols indicate external characteristics.

COLOR

D E F G H I J Faint Very Light Light

CLARITY

FL	IF	VVS ¹⁻²	VS ¹⁻²	SI ¹⁻²	I ¹⁻³
Flawless	Internally Flawless	Very Very Slightly Included	Very Slightly Included	Slightly Included	Included

LABORATORY GROWN DIAMOND REPORT



October 1, 2025

IGI Report Number **LG737562634**

Description	LABORATORY GROWN DIAMOND
-------------	--------------------------

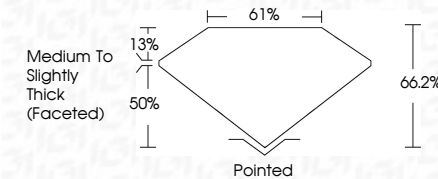
Shape and Cutting Style **SQUARE CUSHION MODIFIED
BRILLIANT**

Measurements **8.56 X 8.44 X 5.59 MM**

GRADING RESULTS

Carat Weight **3.06 CARATS**

Color Grade E

Clarity Grade **VVS 2**

ADDITIONAL GRADING INFORMATION

Polish **EXCELLENT**Symmetry **EXCELLENT**Fluorescence **NONE**Inscription(s) LG737562634

Comments: This Laboratory Grown Diamond was created by Chemical Vapor Deposition (CVD) growth process.
Type IIa



IG



© IGI 2020, International Gemological Institute

FD - 10 20

www.igi.org

THIS DOCUMENT WAS PRODUCED WITH THE FOLLOWING SECURITY MEASURES: SPECIAL DOCUMENT PAPER, INK SCREENS, WATERMARK, BACKGROUND DESIGNS, HOLOGRAM AND OTHER SECURITY FEATURES NOT LISTED AND DO EXCEED DOCUMENT SECURITY INDUSTRY GUIDELINES

October 1, 2025	
IGI Report No LG757562634	
SQUARE CHISEL MODIFIED BRILLIANT	
3.06 CARATS	
5.99 MM	
Color Weight	VVS 2
Color Grade	6A/2
Cutty Grade	61%
Depth	Medium To Slightly Thick (Faceted)
Table	Polished
Girdle	EXCELLENT
	EXCELLENT
	NONE
	681 LG757562634
Comments:	
	Chemically Grown Diamond was created by Chemical Vapor Deposition (CVD) growth process.
	Type IIA