



ELECTRONIC COPY

LG737561937
Report verification at igi.org



October 6, 2025
IGI Report Number **LG737561937**
Description **LABORATORY GROWN DIAMOND**
Shape and Cutting Style **ROUND BRILLIANT**
Measurements **10.60 - 10.67 X 6.41 MM**
GRADING RESULTS
Carat Weight **4.50 CARATS**
Color Grade **FANCY VIVID GREEN**
Clarity Grade **SI 1**
Cut Grade **IDEAL**

LABORATORY GROWN DIAMOND REPORT

October 6, 2025
IGI Report Number **LG737561937**
Description **LABORATORY GROWN DIAMOND**
Shape and Cutting Style **ROUND BRILLIANT**
Measurements **10.60 - 10.67 X 6.41 MM**

GRADING RESULTS

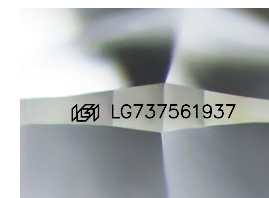
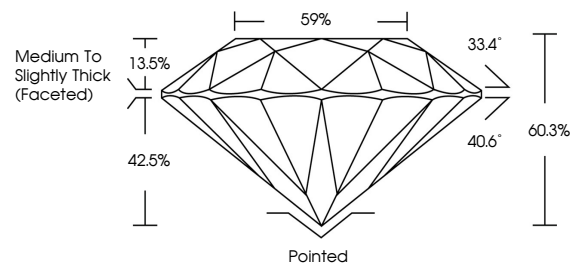
Carat Weight **4.50 CARATS**
Color Grade **FANCY VIVID GREEN**
Clarity Grade **SI 1**
Cut Grade **IDEAL**

ADDITIONAL GRADING INFORMATION

Polish **EXCELLENT**
Symmetry **EXCELLENT**
Fluorescence **VERY SLIGHT**
Inscription(s) **IGI LG737561937**

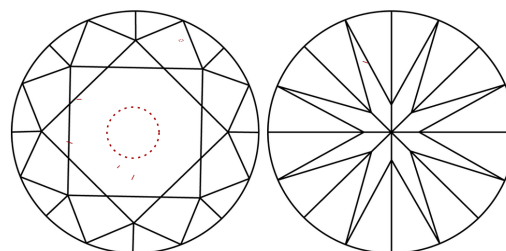
Comments: This Laboratory Grown Diamond was created by Chemical Vapor Deposition (CVD) growth process.
Indications of post-growth treatment.

PROPORTIONS



Sample Image Used

CLARITY CHARACTERISTICS



KEY TO SYMBOLS

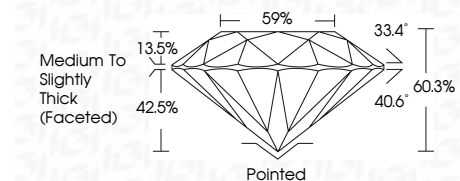
Red symbols indicate internal characteristics.
Green symbols indicate external characteristics.

COLOR

D E F G H I J Faint Very Light Light

CLARITY

FL	IF	VS ¹⁻²	VS ¹⁻²	SI ¹⁻²	I ¹⁻³
Flawless	Internally Flawless	Very Very Slightly Included	Very Slightly Included	Slightly Included	Included



ADDITIONAL GRADING INFORMATION

Polish **EXCELLENT**
Symmetry **EXCELLENT**
Fluorescence **VERY SLIGHT**
Inscription(s) **IGI LG737561937**
Comments: This Laboratory Grown Diamond was created by Chemical Vapor Deposition (CVD) growth process.
Indications of post-growth treatment.



October 6, 2025
IGI Report No LG737561937
ROUND BRILLIANT
4.50 CARATS
Carat Weight
Color Grade **FANCY VIVID GREEN**
Clarity Grade **SI 1**
Depth **IDEAL**
Table **60.3%**
Girdle **59%**
Medium To Slightly Thick (Faceted)
Culet **Pointed**
Polish **EXCELLENT**
Symmetry **EXCELLENT**
Fluorescence **VERY SLIGHT**
Inscription(s) **IGI LG737561937**
Comments: This Laboratory Grown Diamond was created by Chemical Vapor Deposition (CVD) growth process.
Indications of post-growth treatment.