



**ELECTRONIC COPY**

LG737559475  
Report verification at igi.org



October 3, 2025  
IGI Report Number **LG737559475**  
Description **LABORATORY GROWN DIAMOND**  
Shape and Cutting Style **CUSHION MODIFIED BRILLIANT**  
Measurements **10.46 X 7.97 X 5.20 MM**  
**GRADING RESULTS**  
Carat Weight **3.17 CARATS**  
Color Grade **D**  
Clarity Grade **VVS 2**

October 3, 2025  
IGI Report Number **LG737559475**  
Description **LABORATORY GROWN DIAMOND**  
Shape and Cutting Style **CUSHION MODIFIED BRILLIANT**  
Measurements **10.46 X 7.97 X 5.20 MM**

**GRADING RESULTS**

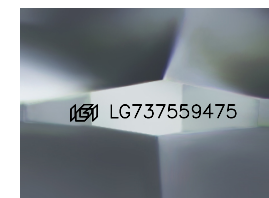
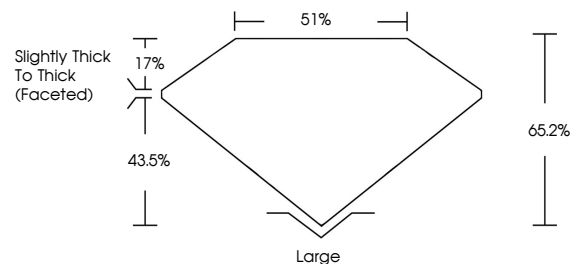
Carat Weight **3.17 CARATS**  
Color Grade **D**  
Clarity Grade **VVS 2**

**ADDITIONAL GRADING INFORMATION**

Polish **EXCELLENT**  
Symmetry **VERY GOOD**  
Fluorescence **NONE**  
Inscription(s) **IGI LG737559475**

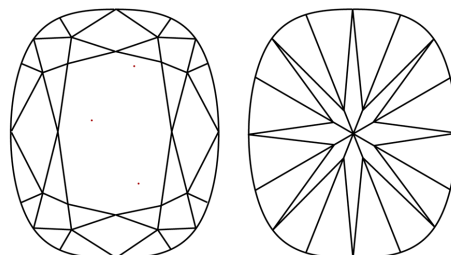
Comments: This Laboratory Grown Diamond was created by Chemical Vapor Deposition (CVD) growth process. Type IIa

**PROPORTIONS**



Sample Image Used

**CLARITY CHARACTERISTICS**



**KEY TO SYMBOLS**

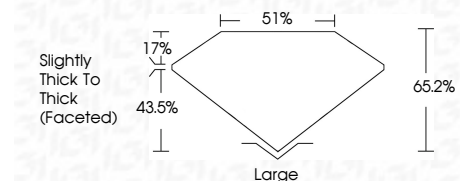
Red symbols indicate internal characteristics.  
Green symbols indicate external characteristics.

**COLOR**

D E F G H I J Faint Very Light Light

**CLARITY**

FL	IF	VVS <sup>1-2</sup>	VS <sup>1-2</sup>	SI <sup>1-2</sup>	I <sup>1-3</sup>
Flawless	Internally Flawless	Very Very Slightly Included	Very Slightly Included	Slightly Included	Included



**ADDITIONAL GRADING INFORMATION**

Polish **EXCELLENT**  
Symmetry **VERY GOOD**  
Fluorescence **NONE**  
Inscription(s) **IGI LG737559475**  
Comments: This Laboratory Grown Diamond was created by Chemical Vapor Deposition (CVD) growth process. Type IIa



**IGI**



October 3, 2025  
IGI Report No **LG737559475**  
**CUSHION MODIFIED BRILLIANT**  
**10.46 X 7.97 X 5.20 MM**  
Carat Weight **3.17 CARATS**  
Color Grade **D**  
Clarity Grade **VVS 2**  
Depth **65.2%**  
Table **51%**  
Girdle **Slightly Thick To Thick (Faceted)**  
Culet **Large**  
Polish **EXCELLENT**  
Symmetry **VERY GOOD**  
Fluorescence **NONE**  
Inscription(s) **IGI LG737559475**  
Comments: This Laboratory Grown Diamond was created by Chemical Vapor Deposition (CVD) growth process. Type IIa