



ELECTRONIC COPY

LG737558470
Report verification at igi.org



September 27, 2025

IGI Report Number **LG737558470**

Description **LABORATORY GROWN DIAMOND**

Shape and Cutting Style **ROUND BRILLIANT**

Measurements **9.45 - 9.50 X 5.61 MM**

GRADING RESULTS

Carat Weight **3.07 CARATS**

Color Grade **E**

Clarity Grade **VVS 2**

Cut Grade **IDEAL**

September 27, 2025
IGI Report Number **LG737558470**
Description **LABORATORY GROWN DIAMOND**
Shape and Cutting Style **ROUND BRILLIANT**
Measurements **9.45 - 9.50 X 5.61 MM**

GRADING RESULTS

Carat Weight **3.07 CARATS**

Color Grade **E**

Clarity Grade **VVS 2**

Cut Grade **IDEAL**

ADDITIONAL GRADING INFORMATION

Polish **EXCELLENT**

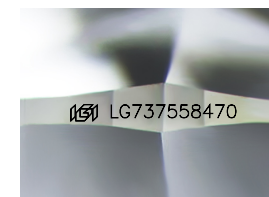
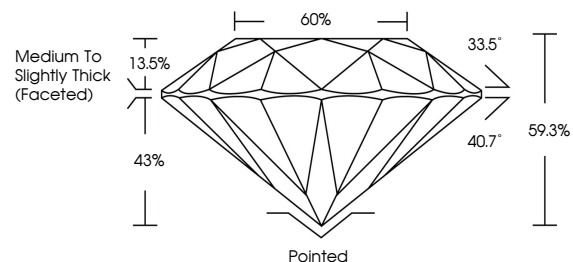
Symmetry **EXCELLENT**

Fluorescence **NONE**

Inscription(s) **IGI LG737558470**

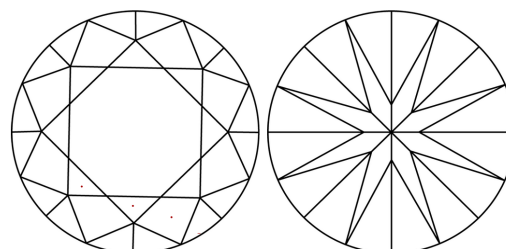
Comments: This Laboratory Grown Diamond was created by Chemical Vapor Deposition (CVD) growth process.
Type IIa

PROPORTIONS



Sample Image Used

CLARITY CHARACTERISTICS



KEY TO SYMBOLS

Red symbols indicate internal characteristics.
Green symbols indicate external characteristics.

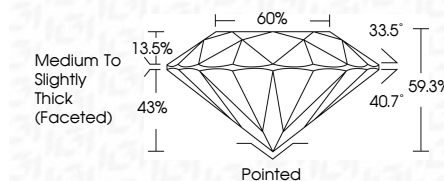
COLOR

D E F G H I J Faint Very Light Light

CLARITY

IF WS¹⁻² VS¹⁻² SI¹⁻² I¹⁻³

Internally Flawless Very Very Slightly Included Very Slightly Included Slightly Included Included



ADDITIONAL GRADING INFORMATION

Polish **EXCELLENT**

Symmetry **EXCELLENT**

Fluorescence **NONE**

Inscription(s) **IGI LG737558470**

Comments: This Laboratory Grown Diamond was created by Chemical Vapor Deposition (CVD) growth process.
Type IIa



IGI



September 27, 2025	IGI Report No LG737558470	3.07 CARATS	E	Pointed	EXCELLENT	EXCELLENT	NONE	IGI LG737558470
ROUND BRILLIANT	9.45 - 9.50 X 5.61 MM	Color Grade	VVS 2	Polish	EXCELLENT	EXCELLENT	NONE	IGI LG737558470
		Clarity Grade	IDEAL	Symmetry	EXCELLENT	EXCELLENT	NONE	IGI LG737558470
		Depth	59.3%	Fluorescence	NONE	NONE	NONE	IGI LG737558470
		Table	60%	Inscription(s)	IGI LG737558470	IGI LG737558470	IGI LG737558470	IGI LG737558470
		Grade	Medium To Slightly Thick (Faceted)					

Comments: This Laboratory Grown Diamond was created by Chemical Vapor Deposition (CVD) growth process.
Type IIa