



**ELECTRONIC COPY**

LG737558223  
Report verification at igi.org



October 13, 2025  
IGI Report Number **LG737558223**  
Description **LABORATORY GROWN DIAMOND**  
Shape and Cutting Style **SQUARE CUSHION MODIFIED BRILLIANT**  
Measurements **6.47 X 6.29 X 3.97 MM**  
**GRADING RESULTS**  
Carat Weight **1.30 CARAT**  
Color Grade **FANCY YELLOW**  
Clarity Grade **VS 1**

October 13, 2025  
IGI Report Number **LG737558223**  
Description **LABORATORY GROWN DIAMOND**  
Shape and Cutting Style **SQUARE CUSHION MODIFIED BRILLIANT**  
Measurements **6.47 X 6.29 X 3.97 MM**

**GRADING RESULTS**

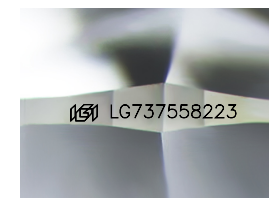
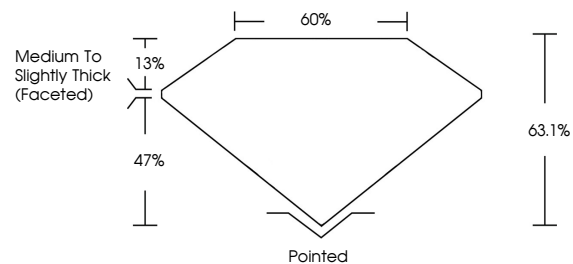
Carat Weight **1.30 CARAT**  
Color Grade **FANCY YELLOW**  
Clarity Grade **VS 1**

**ADDITIONAL GRADING INFORMATION**

Polish **EXCELLENT**  
Symmetry **EXCELLENT**  
Fluorescence **NONE**  
Inscription(s) **IGI LG737558223**

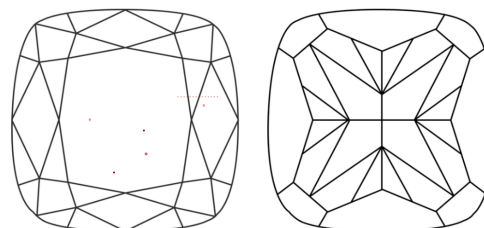
Comments: This Laboratory Grown Diamond was created by Chemical Vapor Deposition (CVD) growth process.

**PROPORTIONS**



Sample Image Used

**CLARITY CHARACTERISTICS**



**KEY TO SYMBOLS**

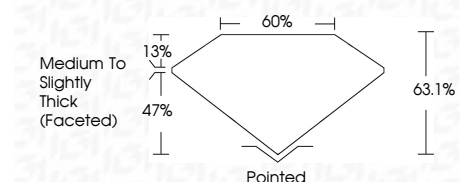
Red symbols indicate internal characteristics.  
Green symbols indicate external characteristics.

**COLOR**

D E F G H I J Faint Very Light Light

**CLARITY**

FL	IF	VS <sup>1-2</sup>	VS <sup>1-2</sup>	SI <sup>1-2</sup>	I <sup>1-3</sup>
Flawless	Internally Flawless	Very Very Slightly Included	Very Slightly Included	Slightly Included	Included



**ADDITIONAL GRADING INFORMATION**

Polish **EXCELLENT**  
Symmetry **EXCELLENT**  
Fluorescence **NONE**  
Inscription(s) **IGI LG737558223**  
Comments: This Laboratory Grown Diamond was created by Chemical Vapor Deposition (CVD) growth process.



October 13, 2025  
IGI Report No LG737558223  
**SQUARE CUSHION MODIFIED BRILLIANT**  
6.47 X 6.29 X 3.97 MM  
1.30 CARAT  
FANCY YELLOW  
VS 1  
63.1%  
60%  
Medium to Slightly Thick (Faceted)  
Pointed  
EXCELLENT  
EXCELLENT  
NONE  
IGI LG737558223  
Comments: This Laboratory Grown Diamond was created by Chemical Vapor Deposition (CVD) growth process.