



ELECTRONIC COPY

LG737556431
Report verification at igi.org



September 26, 2025

IGI Report Number LG737556431

Description LABORATORY GROWN DIAMOND

Shape and Cutting Style ROUND BRILLIANT

Measurements 8.00 - 8.04 X 4.97 MM

GRADING RESULTS

Carat Weight 2.00 CARATS

Color Grade E

Clarity Grade VS 2

Cut Grade EXCELLENT

September 26, 2025

IGI Report Number LG737556431

Description LABORATORY GROWN DIAMOND

Shape and Cutting Style ROUND BRILLIANT

Measurements 8.00 - 8.04 X 4.97 MM

GRADING RESULTS

Carat Weight 2.00 CARATS

Color Grade E

Clarity Grade VS 2

Cut Grade EXCELLENT

ADDITIONAL GRADING INFORMATION

Polish EXCELLENT

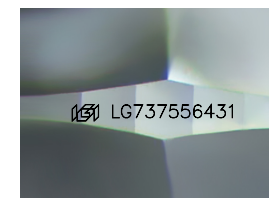
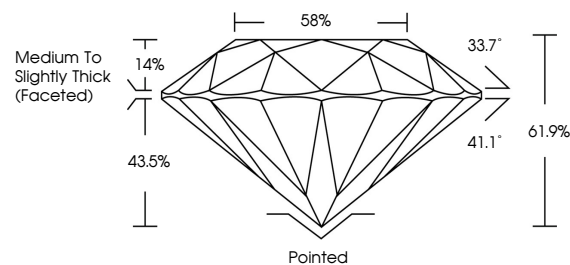
Symmetry VERY GOOD

Fluorescence NONE

Inscription(s) IGI LG737556431

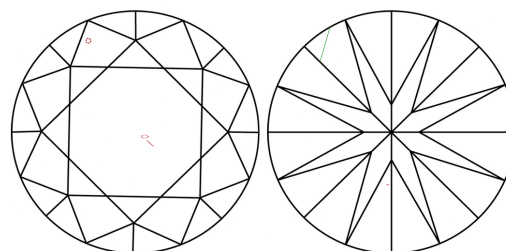
Comments: This Laboratory Grown Diamond was created by Chemical Vapor Deposition (CVD) growth process. Type IIa

PROPORTIONS



Sample Image Used

CLARITY CHARACTERISTICS



KEY TO SYMBOLS

Red symbols indicate internal characteristics. Green symbols indicate external characteristics.

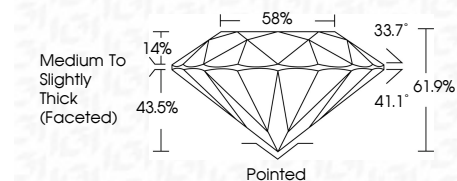
COLOR

D E F G H I J Faint Very Light Light

CLARITY

IF WS 1-2 VS 1-2 SI 1-2 I 1-3

Internally Flawless Very Very Slightly Included Very Slightly Included Slightly Included Included



ADDITIONAL GRADING INFORMATION

Polish EXCELLENT

Symmetry VERY GOOD

Fluorescence NONE

Inscription(s) IGI LG737556431

Comments: This Laboratory Grown Diamond was created by Chemical Vapor Deposition (CVD) growth process. Type IIa



Summary of report details including date, report number, description, measurements, grading results, and additional information.