



ELECTRONIC COPY

LG737555821
Report verification at igi.org



October 4, 2025

IGI Report Number **LG737555821**

Description **LABORATORY GROWN DIAMOND**

Shape and Cutting Style **ROUND BRILLIANT**

Measurements **6.72 - 6.75 X 4.20 MM**

GRADING RESULTS

Carat Weight **1.20 CARAT**

Color Grade **FANCY VIVID BLUE**

Clarity Grade **I 2**

Cut Grade **VERY GOOD**

October 4, 2025

IGI Report Number **LG737555821**

Description **LABORATORY GROWN DIAMOND**

Shape and Cutting Style **ROUND BRILLIANT**

Measurements **6.72 - 6.75 X 4.20 MM**

GRADING RESULTS

Carat Weight **1.20 CARAT**

Color Grade **FANCY VIVID BLUE**

Clarity Grade **I 2**

Cut Grade **VERY GOOD**

ADDITIONAL GRADING INFORMATION

Polish **EXCELLENT**

Symmetry **EXCELLENT**

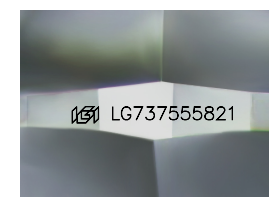
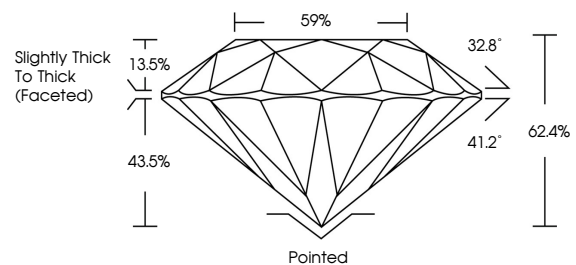
Fluorescence **NONE**

Inscription(s) **LG737555821**

Comments: This Laboratory Grown Diamond was created by Chemical Vapor Deposition (CVD) growth process.

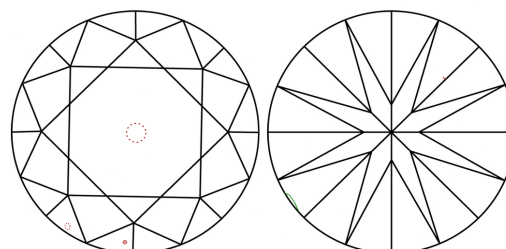
Indications of post-growth treatment.

PROPORTIONS



Sample Image Used

CLARITY CHARACTERISTICS



KEY TO SYMBOLS

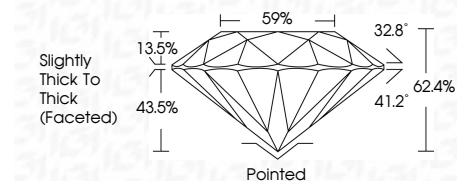
Red symbols indicate internal characteristics.
Green symbols indicate external characteristics.

COLOR

D E F G H I J Faint Very Light Light

CLARITY

FL	IF	VS ¹⁻²	VS ¹⁻²	SI ¹⁻²	I ¹⁻³
Flawless	Internally Flawless	Very Very Slightly Included	Very Slightly Included	Slightly Included	Included



ADDITIONAL GRADING INFORMATION

Polish **EXCELLENT**

Symmetry **EXCELLENT**

Fluorescence **NONE**

Inscription(s) **LG737555821**

Comments: This Laboratory Grown Diamond was created by Chemical Vapor Deposition (CVD) growth process. Indications of post-growth treatment.



October 4, 2025	1.20 CARAT	ROUND BRILLIANT	Pointed
IGI Report No LG737555821	FANCY VIVID BLUE	6.72 - 6.75 X 4.20 MM	EXCELLENT
	I 2	VERY GOOD	EXCELLENT
	62.4%	59%	NONE
	Slightly Thick To Thick (Faceted)		IGI LG737555821
Cut	Polish	Symmetry	Fluorescence
			Inscription(s)

Comments: This Laboratory Grown Diamond was created by Chemical Vapor Deposition (CVD) growth process. Indications of post-growth treatment.