



ELECTRONIC COPY

LG737555813
Report verification at igi.org



October 4, 2025

IGI Report Number **LG737555813**

Description **LABORATORY GROWN DIAMOND**

Shape and Cutting Style **ROUND BRILLIANT**

Measurements **6.43 - 6.46 X 3.88 MM**

GRADING RESULTS

Carat Weight **1.00 CARAT**

Color Grade **FANCY VIVID BLUE**

Clarity Grade **SI 2**

Cut Grade **EXCELLENT**

October 4, 2025
IGI Report Number **LG737555813**
Description **LABORATORY GROWN DIAMOND**
Shape and Cutting Style **ROUND BRILLIANT**
Measurements **6.43 - 6.46 X 3.88 MM**

GRADING RESULTS

Carat Weight **1.00 CARAT**

Color Grade **FANCY VIVID BLUE**

Clarity Grade **SI 2**

Cut Grade **EXCELLENT**

ADDITIONAL GRADING INFORMATION

Polish **EXCELLENT**

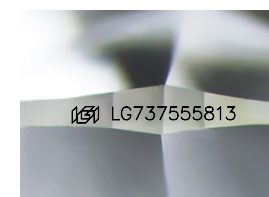
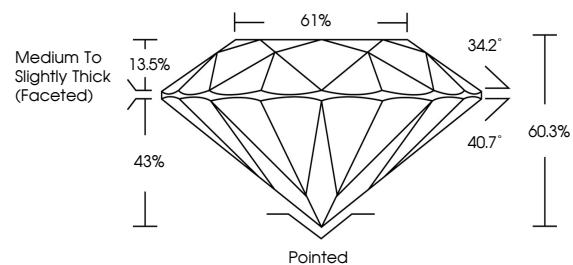
Symmetry **EXCELLENT**

Fluorescence **NONE**

Inscription(s) **LG737555813**

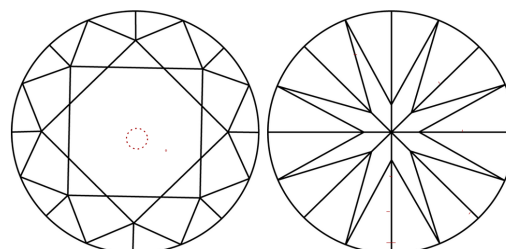
Comments: This Laboratory Grown Diamond was created by Chemical Vapor Deposition (CVD) growth process.
Indications of post-growth treatment.

PROPORTIONS



Sample Image Used

CLARITY CHARACTERISTICS



KEY TO SYMBOLS

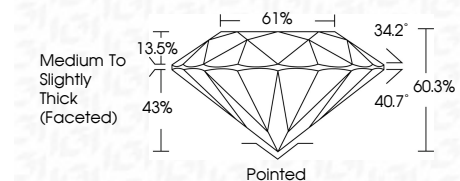
Red symbols indicate internal characteristics.
Green symbols indicate external characteristics.

COLOR

D E F G H I J Faint Very Light Light

CLARITY

FL	IF	VS ¹⁻²	VS ¹⁻²	SI ¹⁻²	I ¹⁻³
Flawless	Internally Flawless	Very Very Slightly Included	Very Slightly Included	Slightly Included	Included



ADDITIONAL GRADING INFORMATION

Polish **EXCELLENT**

Symmetry **EXCELLENT**

Fluorescence **NONE**

Inscription(s) **LG737555813**

Comments: This Laboratory Grown Diamond was created by Chemical Vapor Deposition (CVD) growth process.
Indications of post-growth treatment.



IGI



October 4, 2025	1.00 CARAT
IGI Report No LG737555813	FANCY VIVID BLUE
ROUND BRILLIANT	SI 2
6.43 - 6.46 X 3.88 MM	EXCELLENT
Carat Weight	60.3%
Color Grade	61%
Clarity Grade	Medium To Slightly Thick (Faceted)
Cut Grade	Pointed
Depth	EXCELLENT
Table	EXCELLENT
Girdle	NONE
Culet	NONE
Polish	EXCELLENT
Symmetry	EXCELLENT
Fluorescence	NONE
Inscription(s)	LG737555813

Comments: This Laboratory Grown Diamond was created by Chemical Vapor Deposition (CVD) growth process.
Indications of post-growth treatment.