

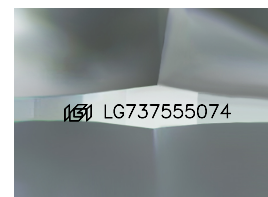
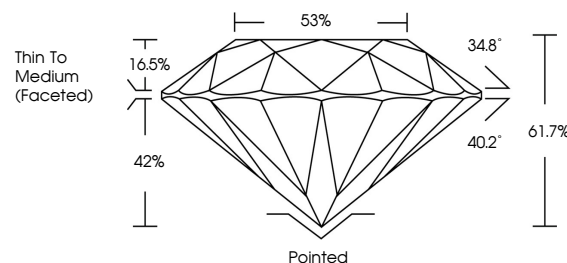


ELECTRONIC COPY

LABORATORY GROWN DIAMOND REPORT

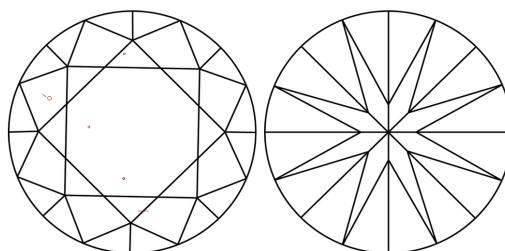
LG737555074
Report verification at igi.org

PROPORTIONS



Sample Image Used

CLARITY CHARACTERISTICS



KEY TO SYMBOLS

Red symbols indicate internal characteristics.
Green symbols indicate external characteristics.

COLOR

D E F G H I J Faint Very Light Light

CLARITY

IF WS¹⁻² VS¹⁻² SI¹⁻² |¹⁻³

Internally Flawless	Very Very Slightly Included	Very Slightly Included	Slightly Included	Included
------------------------	--------------------------------	---------------------------	----------------------	----------



September 25, 2025

IGI Report Number **LG737555074**Description **LABORATORY GROWN DIAMOND**Shape and Cutting Style **ROUND BRILLIANT**

Measurements 9.18 - 9.22 X 5.68 MM

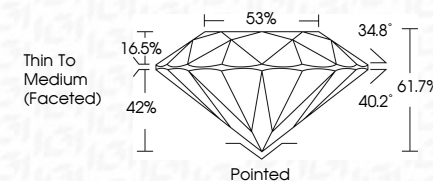
GRADING RESULTS

Carat Weight **2.95 CARATS**

Color Grade E

Clarity Grade VS 1

Cut Grade **IDEAL**



ADDITIONAL GRADING INFORMATION

Polish **EXCELLENT**Symmetry **EXCELLENT**Fluorescence **NONE**Inscription(s) LG737555074

Comments: This Laboratory Grown Diamond was created by Chemical Vapor Deposition (CVD) growth process.
Type IIa



© IGI 2020, International Gemological Institute

FD - 10 20

www.igi.org



THIS DOCUMENT WAS PRODUCED WITH THE FOLLOWING SECURITY MEASURES: SPECIAL DOCUMENT PAPER, INK SCREENS, WATERMARK, BACKGROUND DESIGNS, HOLOGRAM AND OTHER SECURITY FEATURES NOT LISTED AND DO EXCEED DOCUMENT SECURITY INDUSTRY GUIDELINES

September 25, 2025
ICI Report No LG737555074
ROUND BRILLIANT

19.18 - 9.22 X 5.68 MM		
Carat Weight	2.95 CARATS	
Color Grade	E	
Clarity Grade	VS 1	
Cut Grade	IDP AL	
Depth	61.7%	
Table	58%	
Girdle	Thin To Medium (Faceted)	
Culet	Pointed	
Polish	EXCELLENT	
Symmetry	EXCELLENT	
Fluorescence	NONE	
Report #	1C77755074	

Comments:
This Laboratory Grown Diamond was created by Chemical Vapor Deposition (CVD) growth process.