



ELECTRONIC COPY

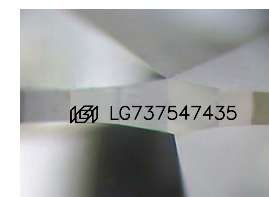
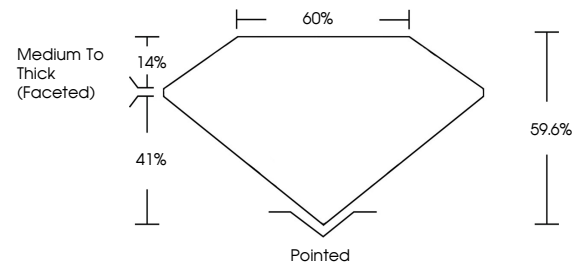
LG737547435
Report verification at igi.org



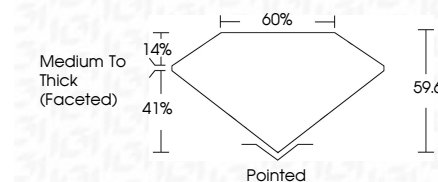
September 26, 2025
IGI Report Number **LG737547435**
Description **LABORATORY GROWN DIAMOND**
Shape and Cutting Style **HEART BRILLIANT**
Measurements **7.77 X 8.96 X 5.34 MM**
GRADING RESULTS
Carat Weight **2.23 CARATS**
Color Grade **F**
Clarity Grade **VVS 2**

September 26, 2025
IGI Report Number **LG737547435**
Description **LABORATORY GROWN DIAMOND**
Shape and Cutting Style **HEART BRILLIANT**
Measurements **7.77 X 8.96 X 5.34 MM**
GRADING RESULTS
Carat Weight **2.23 CARATS**
Color Grade **F**
Clarity Grade **VVS 2**

PROPORTIONS



Sample Image Used



ADDITIONAL GRADING INFORMATION

Polish **EXCELLENT**
Symmetry **EXCELLENT**
Fluorescence **NONE**
Inscription(s) **IGI LG737547435**

Comments: This Laboratory Grown Diamond was created by Chemical Vapor Deposition (CVD) growth process.
Type IIa

ADDITIONAL GRADING INFORMATION

Polish **EXCELLENT**
Symmetry **EXCELLENT**
Fluorescence **NONE**
Inscription(s) **IGI LG737547435**
Comments: This Laboratory Grown Diamond was created by Chemical Vapor Deposition (CVD) growth process.
Type IIa

COLOR

D E F G H I J Faint Very Light Light

CLARITY

IF	VS ¹⁻²	VS ¹⁻²	SI ¹⁻²	I ¹⁻³
Internally Flawless	Very Very Slightly Included	Very Slightly Included	Slightly Included	Included



IGI



September 26, 2025
IGI Report No LG737547435
HEART BRILLIANT
7.77 X 8.96 X 5.34 MM
2.23 CARATS
F
VVS 2
59.6%
60%
Medium To Thick (Faceted)
Pointed
EXCELLENT
EXCELLENT
NONE
IGI LG737547435
Comments: This Laboratory Grown Diamond was created by Chemical Vapor Deposition (CVD) growth process.
Type IIa