



ELECTRONIC COPY

LG737545656
Report verification at igi.org



September 24, 2025

IGI Report Number **LG737545656**

Description **LABORATORY GROWN DIAMOND**

Shape and Cutting Style **ROUND BRILLIANT**

Measurements **6.54 - 6.56 X 4.06 MM**

GRADING RESULTS

Carat Weight **1.07 CARAT**

Color Grade **D**

Clarity Grade **VVS 2**

Cut Grade **IDEAL**

September 24, 2025
IGI Report Number **LG737545656**
Description **LABORATORY GROWN DIAMOND**
Shape and Cutting Style **ROUND BRILLIANT**
Measurements **6.54 - 6.56 X 4.06 MM**

GRADING RESULTS

Carat Weight **1.07 CARAT**

Color Grade **D**

Clarity Grade **VVS 2**

Cut Grade **IDEAL**

ADDITIONAL GRADING INFORMATION

Polish **EXCELLENT**

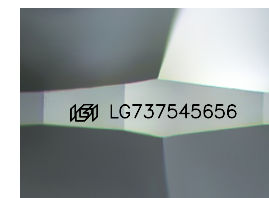
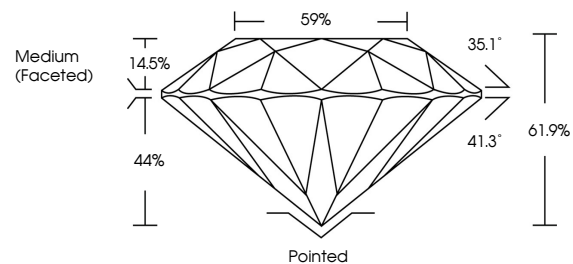
Symmetry **EXCELLENT**

Fluorescence **NONE**

Inscription(s) **LG737545656**

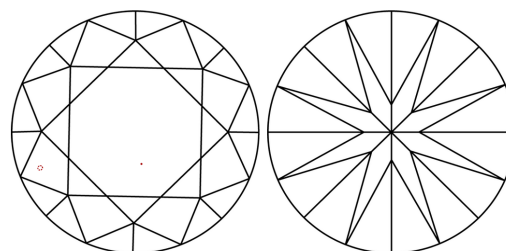
Comments: This Laboratory Grown Diamond was created by Chemical Vapor Deposition (CVD) growth process.
Type IIa

PROPORTIONS



Sample Image Used

CLARITY CHARACTERISTICS



KEY TO SYMBOLS

Red symbols indicate internal characteristics.
Green symbols indicate external characteristics.

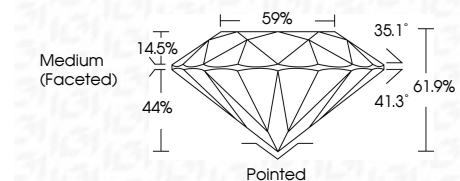
COLOR

D E F G H I J Faint Very Light Light

CLARITY

IF WS¹⁻² VS¹⁻² SI¹⁻² I¹⁻³

Internally Flawless Very Very Slightly Included Very Slightly Included Slightly Included Included



ADDITIONAL GRADING INFORMATION

Polish **EXCELLENT**

Symmetry **EXCELLENT**

Fluorescence **NONE**

Inscription(s) **LG737545656**

Comments: This Laboratory Grown Diamond was created by Chemical Vapor Deposition (CVD) growth process.
Type IIa



IGI



September 24, 2025	1.07 CARAT	Pointed
IGI Report No LG737545656	D	EXCELLENT
ROUND BRILLIANT	VVS 2	EXCELLENT
6.54 - 6.56 X 4.06 MM	IDEAL	NONE
Carat Weight	61.9%	NONE
Color Grade	Medium (Faceted)	IGI LG737545656
Clarity Grade		
Cut Grade		
Depth		
Table		
Girdle		
Polish		
Symmetry		
Fluorescence		
Inscription(s)		

Comments: This Laboratory Grown Diamond was created by Chemical Vapor Deposition (CVD) growth process.
Type IIa