



ELECTRONIC COPY

LG737543717
Report verification at igi.org



September 26, 2025

IGI Report Number LG737543717

Description LABORATORY GROWN DIAMOND

Shape and Cutting Style ROUND BRILLIANT

Measurements 7.42 - 7.49 X 4.52 MM

GRADING RESULTS

Carat Weight 1.57 CARAT

Color Grade G

Clarity Grade VS 2

Cut Grade EXCELLENT

September 26, 2025
IGI Report Number LG737543717
Description LABORATORY GROWN DIAMOND
Shape and Cutting Style ROUND BRILLIANT
Measurements 7.42 - 7.49 X 4.52 MM

GRADING RESULTS

Carat Weight 1.57 CARAT

Color Grade G

Clarity Grade VS 2

Cut Grade EXCELLENT

ADDITIONAL GRADING INFORMATION

Polish VERY GOOD

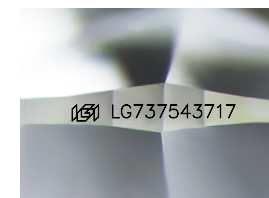
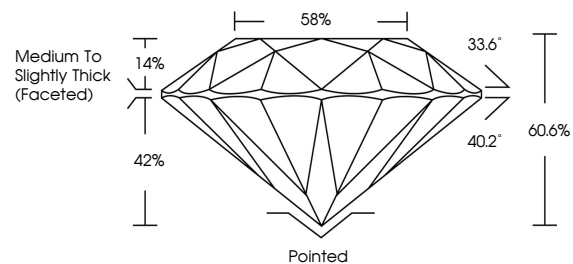
Symmetry VERY GOOD

Fluorescence NONE

Inscription(s) LG737543717

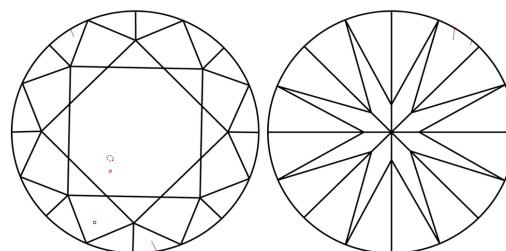
Comments: This Laboratory Grown Diamond was created by Chemical Vapor Deposition (CVD) growth process. Type IIa

PROPORTIONS



Sample Image Used

CLARITY CHARACTERISTICS



KEY TO SYMBOLS

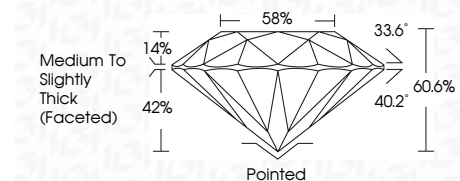
Red symbols indicate internal characteristics. Green symbols indicate external characteristics.

COLOR

D E F G H I J Faint Very Light Light

CLARITY

IF WS 1-2 VS 1-2 SI 1-2 I 1-3
Internally Flawless Very Very Slightly Included Very Slightly Included Slightly Included Included



ADDITIONAL GRADING INFORMATION

Polish VERY GOOD

Symmetry VERY GOOD

Fluorescence NONE

Inscription(s) LG737543717

Comments: This Laboratory Grown Diamond was created by Chemical Vapor Deposition (CVD) growth process. Type IIa



IGI



Summary of report details including date, report number, description, measurements, grading results, and additional information.