



INTERNATIONAL GEMOLOGICAL INSTITUTE

LABORATORY GROWN DIAMOND REPORT

September 24, 2025

IGI Report Number

LG737543359

Description

LABORATORY GROWN DIAMOND

Shape and Cutting Style

HEXAGONAL MODIFIED STEP CUT

Measurements

10.30 X 3.78 X 2.16 MM

GRADING RESULTS

Carat Weight

0.64 CARAT

Color Grade

E

Clarity Grade

VVS 1

ADDITIONAL GRADING INFORMATION

Polish

EXCELLENT

Symmetry

VERY GOOD

Fluorescence

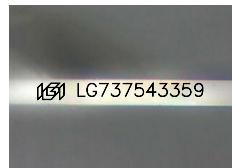
NONE

Inscription(s)

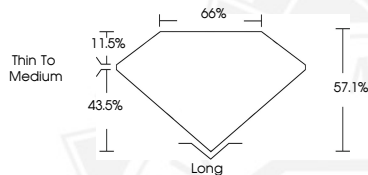
LG737543359

Comments: This Laboratory Grown Diamond was created by Chemical Vapor Deposition (CVD) growth process. Type IIa

ELECTRONIC COPY



Sample Image Used



THIS DOCUMENT WAS PRODUCED WITH THE FOLLOWING SECURITY MEASURES: SPECIAL DOCUMENT PAPER, INK SCREENS, WATERMARK, BACKGROUND DESIGNS, HOLOGRAM AND OTHER SECURITY FEATURES NOT LISTED AND DO EXCEED DOCUMENT SECURITY INDUSTRY GUIDELINES.

For terms & conditions and to verify this report, please visit www.igi.org



September 24, 2025

IGI Report Number LG737543359

HEXAGONAL MODIFIED STEP CUT

LABORATORY GROWN DIAMOND

10.30 X 3.78 X 2.16 MM

Carat Weight 0.64 CARAT

Color Grade E

Clarity Grade VVS 1

Polish EXCELLENT

Symmetry VERY GOOD

Fluorescence NONE

Inscription(s) LG737543359

Comments: This Laboratory Grown Diamond was created by Chemical Vapor Deposition (CVD) growth process. Type IIa



September 24, 2025

IGI Report Number LG737543359

HEXAGONAL MODIFIED STEP CUT

LABORATORY GROWN DIAMOND

10.30 X 3.78 X 2.16 MM

Carat Weight 0.64 CARAT

Color Grade E

Clarity Grade VVS 1

Polish EXCELLENT

Symmetry VERY GOOD

Fluorescence NONE

Inscription(s) LG737543359

Comments: This Laboratory Grown Diamond was created by Chemical Vapor Deposition (CVD) growth process. Type IIa